

Positive Response

In Supply



COMPANY CATALOGUE
PRODUCT LIST



LEAN MEDICAL
AND LABORATORY SUPPLIES (SMC) LTD

Main Office:

Namasuba - Kikajjo,
off Entebbe road
The Hub, Level 3
after Kasozi mosque

Show Room:

Twese plaza F13, Wilson road

Tel: +256 702023536

+256 701217987

+256 755668768

www.leanmedicalsupplies.com

Email: leanmedicalsupplies20@gmail.com

Table of Content

Intoduction	2
Vision, Mission, Core Values	2
Company's Supplier, Company Pesonel	3
Organogram	4
Consumables	5
Product List	11
Operating Theatre Equipment	15
OBS/GYN Equipment	31
Diagnostic Equipment	35
Steriliser(Autoclave)	38
Laboratory Equipment	40
X-ray Radiography System	44
X-ray Digital C-arm System	45
In-Vitro Diagnostic	47
Hemodialysis Machine	49
Hospital Furniture	50
First-Aid Equipment	54
Medical Human Model	55
Ophthalmic Equipment	57
Dental Equipment	59
ENT Equipment	60
Home Care Equipment	61
Scales	62
Bone Dril, Head Bracket	63
Surgical Staplers	64
Surgical Sutures	65
Other Products	66

Life Reinforced



INTRODUCTION

Lean medical and lab supplies (smc) ltd is a registered medical supplies wholesaling business with company registration number 80020002739722 and URA tin no. 1030828790, it was incorporated in 2020 with the aim of value addition and swift response in supply chain of medical and laboratory supply.

VISION

To become one of the leading brands in the medical supplies line of business in Uganda and to establish a one stop medical supplies wholesaling company in Kampala and other key cities in the United States of America.

MISSION

To establish a worldclass medical supplies wholesaling business that will make available a wide range of medical and surgical equipment from top manufacturing brands at affordable prices to businesses in and around Kampala-Uganda and other key cities in thed Uganda.

CORE VALUES

- Team work ■ Professionalism ■ Intergrity ■ Client satisfaction ■ Quality

COMPANY'S SUPPLIERS

We can easily access both our local and overseas suppliers because of the facilities and contacts at our disposal

**TRUSTED
ALL OVER
THE WORLD**

TIME SCHEDULED FOR DELIVERY

For local supplies.....Delivery within 1-5 days
For Overseas supplies.....Delivery within 2-6 weeks

CLIENTELLE

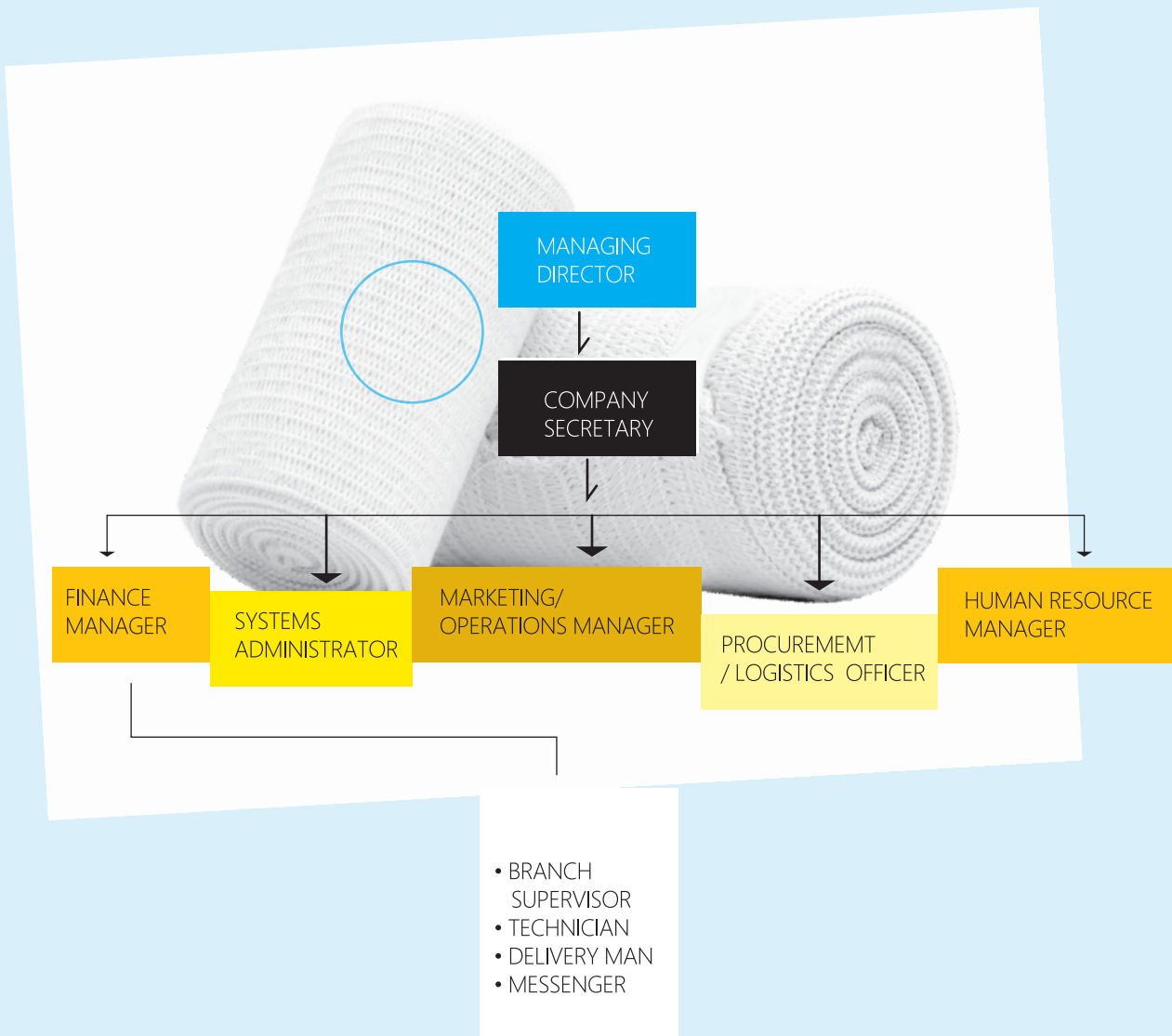
Our target clients are:

- Medical Research Centres
- Medical NGOs
- Government and Private Hospitals
- Universities, Schools and Institutions

COMPANY PERSONNEL

LEAN Medical currently has eight permanent staff who oversee the running of all works including administrative, marketing, and sales
Below is the organizational chart showing the company structure including key personnel






LEAN MEDICAL
AND LABORATORY SUPPLIES (SMC) LTD

- Operating Theater Equipment
- Ob/gyn Equipment
- Diagnostics Equipment
- Autoclave
- Lab Equipments
- Xray Radiography Systems
- In Vitro Diagnostic
- Hemodialysis Equipment
- Hospital Furniture
- Medical Human Model
- Home Care Equipments
- Ent Equipment
- First Aid Equipments

HANDHELD DOA READER

- One reader for urine and saliva drug testing
- Qualitative results in 5-10 minutes
- Built-in rechargeable battery for on-site testing
- Compact design, easy to carry
- Read different test formats (cassette, cup etc.)
- Print report anytime with built-in printer
- Store up to 5000 results
- Data can be transferred via Wi-Fi, support GPS, GPRS or SD card



COLLOIDAL GOLD TEST ANALYZER



Classic colloidal gold detection methods, the results are reliable and stable without waiting, without human intervention, the fastest processing of 40 samples per hour. Automatic recognition of barcode recognition test items and reagent lot numbers. Support: USB, computer. Insert the reagent tube through QR code or USB flash drive. Support quality control function. Small size, light weight, easy to carry. A full range of testing products (including troponin myocardial infarction, CRP/PCT, proBNP, D-Dimer and others), easy to facilitate clinical practice.

Trial range:

Hospitals, disease prevention and control centers, inspection and quarantine agencies, test centers and medical laboratory research and development.

FLUORESCENCE IMMUNOASSAY ANALYZER

All the functions are easy to use.
It can test more than 10 drugs.
The result can be got by automated.
With this system, customer can avoid the judgment deviation caused by the human eyes.



Test item	Catalog No.	Sample type
CK-MB	CKMB-W23F	Whole Blood/Serum/Plasma
Myoglobin	MYO-W23F	Whole Blood/Serum/Plasma
Troponin I	TRO-W23F	Whole Blood/Serum/Plasma
C-reactive Protein Test	CRP-W23F	Whole Blood/Serum/Plasma
D-Dimer	DDM-W23F	Whole Blood/Plasma
NT-proBNP	BNP-W23F	Whole Blood/Serum/Plasma
Serum Amyloid A	SAA-W23F	Whole Blood/Serum/Plasma
PCT (Human Procalcitonin) Test	PCT-W23F	Whole Blood/Serum/Plasma
CRP/SAA	CRP/SAA-W23F	Whole Blood/Serum/Plasma

Tumor

Test item	Catalog No.	Sample type
Prostate Specific Antigen (PSA) Test	PSA-W23MF	Whole Blood/Serum/Plasma

Infectious Diseases

Test item	Catalog No.	Sample type
Hepatitis B Surface Antigen (HBsAg)	HBsAg-W23F	Whole Blood/Serum/Plasma
HCV	HCV-W23F	Whole Blood/Serum/Plasma
Syphilis	SYP-W23F	Whole Blood/Serum/Plasma
HIV	HIV-W23F	Whole Blood/Serum/Plasma
Strep A	STA-S23F	Throat swab
Influenza A/B	FLU-S23F	Swab/ nasal wash
Respiratory Syncytial Virus(RSV)	RSV-S23F	Swab/Nasopharyngeal wash

Renal injury

Test item	Catalog No.	Sample type
β2-Microglobulin	B2M-W23F	Whole blood/Serum/Plasma
Neutrophil gelatinase-associated lipocalin	NGAL-U23F	Urine
Micro-Albumin	ALB-U23F	Urine

Drug of Abuse

Test item	Catalog No.	Sample type
Morphine 0.2ng/mg	MOR-H23F	Hair
Methamphetamine 0.2ng/mg	MET-H23F	Hair
Ketamine 0.3ng/mg	KET-H23F	Hair
Amphetamine 0.2ng/mg	AMP-H23F	Hair
Benzodiazepine 0.05ng/mg	BZD-H23F	Hair
Marijuana 0.1ng/mg	THC-H23F	Hair
Cocaine 0.5ng/mg	COC-H23F	Hair
Mezadone 0.2ng/mg	MTD-H23F	Hair
Opiates 0.2ng/mg	OPI-H23F	Hair

For animal

Test item	Catalog No.	Sample type
Canine CRP	cCRP-W23F	Whole blood/Serum/Plasma



Product Name	Catalog No.	Specimen Used	Test Format	Kit Size	CE mark
Fecal Occult Blood (FOB) Test	FOB-F11	Feces	Strip	25 pcs/box	CE
Fecal Occult Blood (FOB) Test	FOB-F11H	Feces	Strip for Selftesting	1 pcs/box	CE0197
Fecal Occult Blood (FOB) Test	FOB-F23	Feces	Device	25 pcs/box	CE
Fecal Occult Blood (FOB) Test	FOB-F23H	Feces	Device for Selftesting	1 pcs/box	CE0197
Hemoglobin-hemoglobin complex	FOB-F43M	Feces	Hb/ Hb+Hp, 2-window Device	20 pcs/box	CE
Alpha-Fetoprotein (AFP) Test	AFP-W23	Whole Blood/Serum/Plasma	Device	40 pcs/box	CE
Carcinoembryonic Antigen (CEA) Test	CEA-W23	Whole Blood/Serum/Plasma	Device	40 pcs/box	CE
Prostate Specific Antigen (PSA) Test	PSA-W23M	Whole Blood/Serum/Plasma	Device	40 pcs/box	CE2265
Hemoglobin Level Ferritin	HL-FRT-W23M	Whole Blood/Serum/Plasma	Device	40 pcs/box	CE
Hemoglobin Ferritin	FRT-W23M	Whole Blood/Serum/Plasma	Device	40 pcs/box	CE
Ferritin	TRF-F23	Feces	Device	25 pcs/box	CE
Ferritin and Fecal Occult Blood Ibo Test	TFB-F23	Feces	2-window Device	25 pcs/box	CE
Ferritin and Fecal Occult Blood ie Test	TFOB-F23	Feces	Single Device	25 pcs/box	CE
Ferritin and Fecal Occult Blood + Hemoglobin-hemoglobin Test Device	TFOBHP-F43M	Feces	2-window Device	25 pcs/box	CE



Food panel

Product Name	Catalog No.	Specimen Used	Test Format	Kit Size	CE mark
Egg white Allergy Test	F1-W23	Whole Blood/Serum/Plasma	Device	40 pcs/box	CE
Milk Allergy Test	F2-W23	Whole Blood/Serum/Plasma	Device	40 pcs/box	CE
Whole wheat flour Allergy Test	F4-W23	Whole Blood/Serum/Plasma	Device	40 pcs/box	CE
Peanut Allergy Test	F13-W23	Whole Blood/Serum/Plasma	Device	40 pcs/box	CE
Soybean Allergy Test	F14-W23	Whole Blood/Serum/Plasma	Device	40 pcs/box	CE
Crab Allergy Test	F23-W23	Whole Blood/Serum/Plasma	Device	40 pcs/box	CE
Shrimp Allergy Test	F24-W23	Whole Blood/Serum/Plasma	Device	40 pcs/box	CE
Beef Allergy Test	F27-W23	Whole Blood/Serum/Plasma	Device	40 pcs/box	CE
Lamb Allergy Test	F28-W23	Whole Blood/Serum/Plasma	Device	40 pcs/box	CE
Cashew nut Allergy Test	F202-W23	Whole Blood/Serum/Plasma	Device	40 pcs/box	CE

Inhalation panel

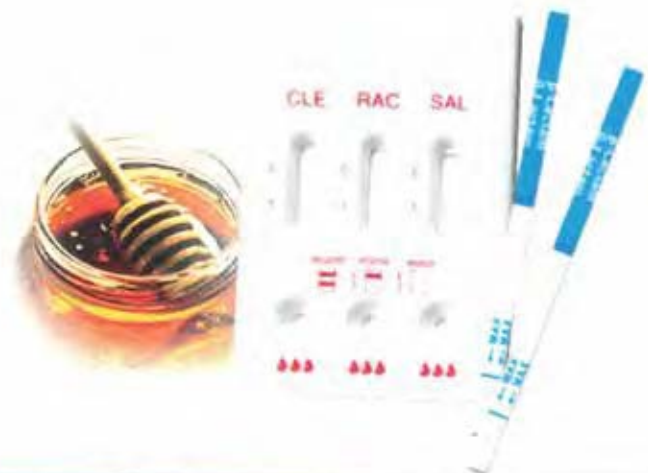
Mite dust (D.Pteronyssinus) Allergy Test	D1-W23	Whole Blood/Serum/Plasma	Device	40 pcs/box	CE
Mite dust (D.Iarinae) Allergy Test	D2-W23	Whole Blood/Serum/Plasma	Device	40 pcs/box	CE
Cat dander Allergy Test	E1-W23	Whole Blood/Serum/Plasma	Device	40 pcs/box	CE
Dog dander Allergy Test	E5-W23	Whole Blood/Serum/Plasma	Device	40 pcs/box	CE
Timothy Allergy Test	G6-W23	Whole Blood/Serum/Plasma	Device	40 pcs/box	CE
Cockroach Allergy Test	I6-W23	Whole Blood/Serum/Plasma	Device	40 pcs/box	CE
Penicillium chrysogenum Allergy Test	M1-W23	Whole Blood/Serum/Plasma	Device	40 pcs/box	CE
Cladosporium herbarum Allergy Test	M2-W23	Whole Blood/Serum/Plasma	Device	40 pcs/box	CE
Aspergillus fumigatus Allergy Test	M3-W23	Whole Blood/Serum/Plasma	Device	40 pcs/box	CE
Alternaria alternate Allergy Test	M6-W23	Whole Blood/Serum/Plasma	Device	40 pcs/box	CE
Oak white Allergy Test	T7-W23	Whole Blood/Serum/Plasma	Device	40 pcs/box	CE
Elm Allergy Test	T8-W23	Whole Blood/Serum/Plasma	Device	40 pcs/box	CE
Sycamore Allergy Test	T61-W23	Whole Blood/Serum/Plasma	Device	40 pcs/box	CE
Ragweed Allergy Test	W1-W23	Whole Blood/Serum/Plasma	Device	40 pcs/box	CE
Mugwort Allergy Test	W6-W23	Whole Blood/Serum/Plasma	Device	40 pcs/box	CE



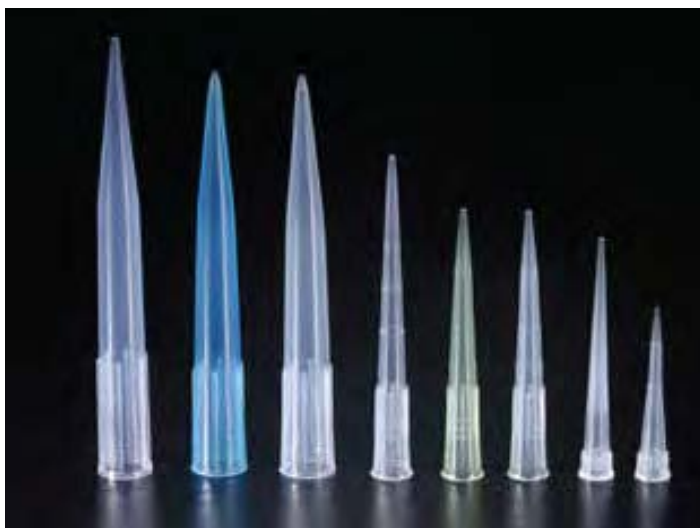
Biochemistry Products

Product Name	Catalog No.	Specimen Used	Test Format	Kit Size	CE mark
Vaginal pH Test	PH-S11	Vaginal Secretion	Strip	50 pcs/box	CE
Vaginal pH Test	PH-S23	Vaginal Secretion	Device	40 pcs/box	CE
Urine Adulteration (pH/CRE/S.G/ GLUT/NIT/OXI)	URL-U12	Urine	Strip	25 pcs/canister	CE
BV Multi-Test (PH, H2O2, LEU, Neuraminidase)	BV-S11	Vaginal Secretion	Strip	50 pcs/box	CE
Alcohol	ALC-S11	Saliva/ 0.02%	Strip	50 pcs/box	CE
Alcohol	ALC-U11	Urine/0.02%-0.05%	Strip	50 pcs/box	CE
Alcohol	ALC-B70	Breath Alcohol Screen Test	Tube	25 pcs/box	CE
Microalbumin/Creatinine	ALB/CRE-U11	Urine	Strip	50pcs/canister	CE
Urinalysis strip 10 parameters	URS-10T	Urine	Strip	100pcs/canister	CE

FOOD SAFETY



Product line	CAT. NO.	Specimen	Format	Kit Size	Certificate
Ractopamine Test	RAC-U23	Pig Urine	Device	40pcs/box	
Clenbuterol Test	CLE-U23	Pig Urine	Device	40pcs/box	
Beta-Lactam Test	BLT-M23	Raw milk	Device	40pcs/box	



PRODUCT LIST



ITEM NO.	DESCRIPTION	MANUFACTURER	UNIT PACK
1	BD Blood lancets spring loaded PINK 1.8ml	BD BELGIUM	200/pk
2	BD Blood lancets spring loaded blue 2ml	BD BELGIUM	200/pk
3	BD Blood lancets spring loaded G30	BD BELGIUM	200/Pk
4	BD Blood lancets G28	BD BELGIUM	100/Pk
5	BD Blood lancets G23	BD BELGIUM	100/Pk
6	BD Vacutainer tube EDTA 2ml	BD BELGIUM	100/pk
7	BD Vacutainer tube EDTA 4ml	BD BELGIUM	100/pk
8	Vacutainer tube EDTA 6ml	BD BELGIUM	100/pk
9	Vacutainer tube EDTA 10ml	BD BELGIUM	100/pk
10	Vacutainer tube Grey top 4 ml	BD BELGIUM	100/pk
11	Vacutainer tube Plain 2ml	BD BELGIUM	100/pk
12	Vacutainer tube Plain 4ml	BD BELGIUM	100/pk
13	Vacutainer tube Plain 6ml	BD BELGIUM	100/pk
14	Vacutainer tube plain 10ml	BD BELGIUM	100/pk
15	Vacutainer tube SST 3.5ml	BD BELGIUM	100/pk
16	Vacutainer tube SST 5ml	BD BELGIUM	100/pk
17	Vacutainer tube SST 8.5ml	BD BELGIUM	100/pk
18	Vacutainer tube lithium heparin 2ml	BD BELGIUM	100/pk
19	Vacutainer tube lithium heparin 4ml	BD BELGIUM	100/pk
20	Vacutainer tube lithium heparin 6ml	BD BELGIUM	100/pk
21	Vacutainer tube lithium heparin 10ml	BD BELGIUM	100/pk
22	Vacutainer tube ACD 6ml	BD BELGIUM	100/pk
23	Vacutainer tube ACD 8.5ml	BD BELGIUM	100/pk
24	Vacutainer tubes CD4 Stabilization tubes 2ml	BD BELGIUM	100/pk
25	Vacutainer tubes CPT tubes	BD BELGIUM	60/pk
26	Vacutainer tubes RNA /PAX GENE tubes 8.5ml	BD BELGIUM	100/pk
27	Vacutainer Blue top 2.7ml	BD BELGIUM	100/pk
28	Vacutainer Blue top 4.5ml	BD BELGIUM	100/pk
29	Vacutainer PPT tubes 8.5ml	BD BELGIUM	100/pk
30	Vacutainer racks	BD BELGIUM	each
31	BD seditainer tubes 1.8ml	BD BELGIUM	100/pk
32	BD seditainer stand	BD BELGIUM	each
33	Eclipse Needles G21	BD BELGIUM	48/pk
34	Vacutainer Needle G21	BD BELGIUM	100/pk
35	F lash back Needles	BD BELGIUM	50/pk
36	Safety lock (Butterfly) G21	BD BELGIUM	50/pk
37	Safety lok (Butterfly needles G23	BD BELGIUM	50/pk
38	BD Microtainer tubes EDTA	BD BELGIUM	50/pk
39	BD Microtainer tubes Plain	BD BELGIUM	50/pk
40	BD Microtainer lithium heparin	BD BELGIUM	50/pk
41	Vacutainer needle holder	BD BELGIUM	250/pk
42	Sharp Containers 3L	BD BELGIUM	each
43	Sharp Containers 7.5L	BD BELGIUM	each
44	Sharp Containers 22L	BD BELGIUM	each
45	BD Falcon tubes 5ml	BD BELGIUM	125/pk
46	Syringe luer 2ml with needle disposable	BD BELGIUM	100/pk
47	Syringe luer 5ml with needle disposable	BD BELGIUM	100/pk
48	Syringe luer 10ml with needle disposable	BD BELGIUM	100/pk
49	Syringe luer 20ml with needle disposable	BD BELGIUM	80/pk
50	Syringe luer 50ml with needle disposable	BD BELGIUM	each
51	Tourniquets (pronto)	BD BELGIUM	each
52	Tourniquets (stretch)	BD BELGIUM	25/pk

SARSTEDT GERMANY			
53	Pipette tips (Yellow) 200ul	SARSTEDT GERMANY	500/pk
54	Pipette tips (Blue) 1000ul	SARSTEDT GERMANY	250/pk
55	Pipette tips (neutral)300ul	SARSTEDT GERMANY	500/pk
56	Biosphere tip blue 100ul	SARSTEDT GERMANY	100
57	Biosphere tips yellow200ul	SARSTEDT GERMANY	96
58	Biosphere tips yellow100ul	SARSTEDT GERMANY	96
59	Centrifuge tube/Falcon Tube(Sarstedt) 15ml	SARSTEDT GERMANY	50/pk
60	Centrifuges tube/Falcon Tube (Sarstedt) 50ml	SARSTEDT GERMANY	25/pk
61	Micro tubes 2.0ml non- Sterile (Sarstedt)without cap	SARSTEDT GERMANY	250/pk
62	Micro tubes 2.0ml non- Sterile (Sarstedt) with cap	SARSTEDT GERMANY	250/pk
63	Micro tubes 2.0ml Sterile (Sarstedt)	SARSTEDT GERMANY	100/pk
64	Eppendorf 1.5ml non sterile	SARSTEDT GERMANY	500/pk
65	Eppendorf 1.5ml sterile	SARSTEDT GERMANY	100/pk
66	Pipette Pasteur Plastic 1ml (Sarstedt)	SARSTEDT GERMANY	500/pk
67	Pipette Pasteur plastic 3.5ml non sterile(Sarstedt)	SARSTEDT GERMANY	500/pk
68	Pipette Pasteur plastic 3.5ml sterile (Sarstedt)	SARSTEDT GERMANY	42/pk
69	Pipette Pasteur Plastic 6ml (Sarstedt)	SARSTEDT GERMANY	400/pk
70	Stool Examination container	SARSTEDT GERMANY	each
71	Urine containers(Yellow)	SARSTEDT GERMANY	each
72	Sputum containers Sterile-White top (Sarstedt)	SARSTEDT GERMANY	each
73	Card boards 9x9	SARSTEDT GERMANY	each
74	Card boards 10x10	SARSTEDT GERMANY	each
75	Serological pipette 10ml (Sarstedt)	SARSTEDT GERMANY	50/pk
76	Serological pipette 5ml (Sarstedt)	SARSTEDT GERMANY	50/pk
77	Serological pipette 25ml (Sarstedt)	SARSTEDT GERMANY	25/pk
78	Micro Plates 96 wells v-bottom	SARSTEDT GERMANY	each
79	Micro Plates 96 wells round bottom	SARSTEDT GERMANY	each
80	Micro plate lids	SARSTEDT GERMANY	each
81	Screw caps red	SARSTEDT GERMANY	500/pk
82	Screw caps green	SARSTEDT GERMANY	500/pk
83	Screw caps purple	SARSTEDT GERMANY	500/pk
84	Screw caps Blue	SARSTEDT GERMANY	500/pk
85	Felt Pens Sartedt ((Sarstedt)) laboratory pens	SARSTEDT GERMANY	each
86	Sharp containers 2.3ltrs	SARSTEDT GERMANY	each
87	Plastic swabs amies	SARSTEDT GERMANY	100/pk
88	Stick and lift labels (Sarstedt) 35.9x19	SARSTEDT GERMANY	25 sheets
89	Stick and lift labels (Sarstedt) 63.5	SARSTEDT GERMANY	25sheets
90	Dentol rolls	SARSTEDT GERMANY	100/pk
O T H E R S			
91	Crag Kit/Crypto La Test REAGENT	IMMY USA	120T
92	CRAG Crypto La TEST STRIPS	IMMY USA	50T
93	HIV Buffer for Determine kit (Alere)	ALERE JAPAN	Vial
94	HIV Determine 1/11 (Alere)	ALERE JAPAN	100T
95	Pima beads	ALERE JAPAN	1
96	Pima cartridges	ALERE JAPAN	100
97	Pima PRINTER PAPER	ALERE JAPAN	10
98	Determine syphilis kit	ALERE JAPAN	100
99	Gloves non sterile small disposable POWDERED	SENSITIVE TOUCH MALAYSIA	100/pk
100	Gloves non sterile medium disposable POWDERED	SENSITIVE TOUCH MALAYSIA	100/pk
101	Gloves non sterile large disposable POWDERED	SENSITIVE TOUCH MALAYSIA	100/pk

PRODUCT LIST

102	Powder free gloves small		100/pk
103	Powder free gloves Medium		100/pk
104	Powder free gloves Large		100/pk
105	Nitrile gloves Small		100/pk
106	Nitrile gloves Medium		100/pk
107	Nitrile gloves Large		100/pk
108	Gloves surgical sterile		7.5 50/pk
109	Gloves surgical sterile		8 50/pk
110	Laboratory gowns DISPOSABLE		10/pk
111	Pregnancy (HcG) Rapid kit Dipstick		50T
112	Toxo IgM/IgG Rapid Test Cassettes		25T
113	HBsAg Rapid Test Dipstick		50T
114	HCV Rapid Test Cassettes		25T
115	H-pyrosi (Vaxpert) ANTIGEN Cassettes		25T
116	H.Pyrosi Antibody Rapid Test Cassete		25T
117	Malaria. P.f/pan Rapid test Cassete		25T
118	Syphilis Rapid Test Cassete		25T
119	Typhoid Rapid Test Cassete		25T
120	Urinalysis Reagent strips 10 parameters		100T
121	Pipette tips (Yellow) 200UL	CHINA	1000
122	Pipette tips (Blue) 1000UL	CHINA	5000
123	Urine container sterile blue top	CHINA	each
124	Urine container red top	CHINA	each
125	Stool container blue top	CHINA	each
126	Transfer pipettes non sterile 3ml	CHINA	500
127	Slide boxes plastic with hinges	CHINA	each
128	Alcohol swabs	CHINA	100
129	Alcohol swabs	CHINA	200
130	Microscope cover slips 22x22 mm	CHINA	100/pk
131	Microscope slides frosted	CHINA	50/pk
132	Glucose star machines	GLUCOSURE STAR	each
133	Glucose Strips	GLUCOSURE STAR	50T
134	Biohazard bags RED 24X30	KENYA	50/pk
135	Biohazard bags Black 24X30	KENYA	50/pk
136	Biohazard bags Yellow 24X30	KENYA	50/pk
137	Biohazard bags RED 24X40	KENYA	50/pk
138	Biohazard bags Black 24X40	KENYA	50/pk
139	Biohazard bags Yellow 24X40	KENYA	50/pk
140	Cotton wool 500gm	UGANDA	roll
141	Cotton wool 200gm	UGANDA	roll
142	Cotton wool 250gm	UGANDA	roll
143	Capillary Heparinised tubes 75 µl	HIRSCHMAN USA	100/pk
144	Capillary Heparinised tubes 100ul	DRUMMOND USA	100 pk
145	Capillary Heparinised tubes 200ul	DRUMMOND USA	100 pk
146	Capillary Heparinised tubes 200ul	DRUMMOND USA	250 pk
147	Distilled water	UGANDA	20ltr
148	Dispensing envelopes	KENYA	100
149	Handgel hand sanitizers	AVAILABLE UPON REQUEST	60ml
150	Iodine Solution 2%	AVAILABLE UPON REQUEST	100ml
151	Crystal violet	AVAILABLE UPON REQUEST	Litre
152	Sodium Hypochlorite-jik	AVAILABLE UPON REQUEST	750ml
153	Sodium Hypochlorite-jik	AVAILABLE UPON REQUEST	5L
154	Anti Serum A	AVAILABLE UPON REQUEST	10ml
155	Anti Serum B	AVAILABLE UPON REQUEST	10ml
156	Anti Serum AB	AVAILABLE UPON REQUEST	10ml
157	Anti Serum D	AVAILABLE UPON REQUEST	10ml

158	Acetone 1 litre	AVAILABLE UPON REQUEST	1 ltr
159	Acetone 2.5 litres	AVAILABLE UPON REQUEST	1 ltr
160	Bench guards	AVAILABLE UPON REQUEST	50/pk
161	Brucella Arbortus Antigen	AVAILABLE UPON REQUEST	5ml
162	Brucella mellitus	AVAILABLE UPON REQUEST	5ml
163	BP machine	AVAILABLE UPON REQUEST	each
164	Ethanol spray bottles	AVAILABLE UPON REQUEST	1 litre
165	Ethanol spray bottles	AVAILABLE UPON REQUEST	2 litres
166	Gauze 40x8	AVAILABLE UPON REQUEST	each
167	Gauze 91x90 cm	AVAILABLE UPON REQUEST	each
168	Glucose intravenous infusion	AVAILABLE UPON REQUEST	100ml
169	Grams iodine	AVAILABLE UPON REQUEST	1 ltr
170	Masks N95	3M	20 /Pkt
171	Stethoscope	AVAILABLE UPON REQUEST	each
172	Salmonella Antigen (H)	AVAILABLE UPON REQUEST	5ml
173	Salmonella Antigen(O)	AVAILABLE UPON REQUEST	5ml
174	Thermometer digital room	AVAILABLE UPON REQUEST	each
175	Test tube racks small	AVAILABLE UPON REQUEST	each
176	Wash bottles	AVAILABLE UPON REQUEST	each
177	Western green tubes	AVAILABLE UPON REQUEST	each
178	Zip lock bags small	AVAILABLE UPON REQUEST	100/pk
179	Zip lock bags medium	AVAILABLE UPON REQUEST	50/pk

GLASS WARE AND PLASTIC WARE			
180	Bottle universal	AVAILABLE UPON REQUEST	28ml
181	Petri dishes	CHINA 10/pk	
182	Reagent troughs		each
MICROSCOPE STAINING			
183	Immersion Oil	AVAILABLE UPON REQUEST	100ml
184	Microscope cleaning paper	AVAILABLE UPON REQUEST	100 sheets
5	Field stain A	AVAILABLE UPON REQUEST	1L
186	Field stain B	AVAILABLE UPON REQUEST	1L
187	Liquiod soap 5 ltrs	AVAILABLE UPON REQUEST	
188	Spirit	AVAILABLE UPON REQUEST	10ml
STATIONERY			
189	Laser tough tags (USA)	UAE	25sheets/pk
190	Rik Labels	AVAILABLE UPON REQUEST	25/pk
191	Filter papers 185mm	AVAILABLE UPON REQUEST	100/pk
192	Filter papers 112.5 mm	AVAILABLE UPON REQUEST	100/pk
193	Glassine envelopes	AVAILABLE UPON REQUEST	100/pk
194	Kitchen rolls/tissue/paper	AVAILABLE UPON REQUEST	each
195	Safety boxes	AVAILABLE UPON REQUEST	each

Anesthesia Machine

AR-325

- Pneumatically driven electronically controlled system
- Build-in ventilator, 10.4" TFT color LCD screen
- 5-tube Flow meter: O₂, N₂O, Air, 0.1L/Min~10L/Min
- O₂, N₂O linkage and N₂O Stopper
- Low oxygen pressure alarm
- Flow rate of rapid oxygen supply: 25~75L/min
- Two Vaporizer: Halothane, Enflurane, Isoflurane and Sevoflurane
- Respiratory Bellows: bellows for adults&children
- Ventilation mode: IPPV, SIPPV, SIMV, PEEP, MANUAL, SIGH (IMV, VCV, PCV)
- Tidal volume: 50~1500 ml (20~1500 ml)
- Rate: 1~99 bpm
- SIMV rate: 2~20 bpm
- I:E: 2:1~1:8 (4:1~1:8)
- Inspiratory trigger pressure: -1.0~2.0 kPa
- PEEP: 0~2.0 kPa
- Pressure range: 1.0~6.0 kPa
- SIGH: 1.5 times the inspiratory time (70~150 adjustable)
- Inspiratory platform: 0~50%
- Security Alarm System: Oxygen Concentration alarm, Airway pressure alarm, ventilation volume alarm, Sustained high-pressure alarm, Suffocation alarm



Anesthesia Machine

AR-324

- Pneumatically driven electronically controlled system
- Build-in ventilator, 5.7" LCD screen
- 4-tube Flow meter: O₂, N₂O, 0.1L/Min~10L/Min
- O₂, N₂O linkage and N₂O Stopper
- Low oxygen pressure alarm
- Flow rate of rapid oxygen supply: 25~75L/min
- Two Vaporizer: Halothane, Enflurane, Isoflurane and Sevoflurane
- Respiratory Bellows: bellows for adults&children
- Ventilation mode: IPPV, SIPPV, SIMV, PEEP, MANUAL, SIGH
- Tidal volume: 50~1500 ml
- Rate: 2~99 bpm
- SIMV rate: 2~20 bpm
- I:E: 2:1~1:8
- Inspiratory trigger pressure: -1.0~2.0 kPa
- PEEP: 0~2.0 kPa
- Pressure range: 1.0~6.0 kPa
- SIGH: 1.5 times the inspiratory time
- Security Alarm System: Oxygen Concentration alarm, Airway pressure alarm, ventilation volume alarm, Sustained high-pressure alarm, Suffocation alarm



Anesthesia Machine

AR-323

- Pneumatically driven electronically controlled system
- Build-in ventilator, 5.7" LCD screen
- 4-tube Flow meter: O₂, N₂O, 0.1L/Min~10L/Min
- O₂, N₂O linkage and N₂O Stopper
- Low oxygen pressure alarm
- Flow rate of rapid oxygen supply: 25~75L/min
- One Vaporizer: Halothane, Enflurane, Isoflurane and Sevoflurane
- Respiratory Bellows: bellows for adults&children
- Ventilation mode: IPPV, SIPPV, SIMV, PEEP, MANUAL, SIGH, (IMV, VCV, PCV)
- Tidal volume: 50~1500 ml (20~1500 ml)
- Rate: 1~99 bpm
- SIMV rate: 2~20 bpm
- I:E: 2:1~1:8 (4:1~1:8)
- Inspiratory trigger pressure: -1.0~2.0Kpa
- PEEP: 0~2.0Kpa
- Pressure Range: 1.0~6.0Kpa
- SIGH: 1.5 times the inspiratory time (70~150 adjustable)
- Inspiratory platform: 0~50%
- Security Alarm System: Oxygen Concentration alarm, Airway pressure alarm, Per-minute ventilation volume alarm, Sustained high-pressure alarm, Suffocation alarm



Anesthesia Machine

AR-321

- Pneumatically driven electronically controlled system
- Build-in ventilator, 4.8" LCD screen
- Flow meter: O₂: 0.1~2L/min 2.5~10L/min
- Flow rate of rapid oxygen supply: 25~75L/min
- Low oxygen pressure alarm
- One Vaporizer: Halothane, Enflurane, Isoflurane and Sevoflurane
- Respiratory Bellows: bellows for adults&children
- Ventilation mode: PPV, MANUAL
- Tidal volume: 50~1500ml
- Rate: 2~99 bpm
- SIMV rate: 2~20 bpm
- I:E: 2:1~1:8
- Inspiratory trigger pressure: -1.0~2.0 kPa
- Pressure range: 1.0~6.0 kPa
- Security Alarm System: Airway pressure alarm, Per-minute ventilation volume alarm, Sustained high-pressure alarm, Suffocation alarm



Portable Anesthesia Machine

AR-902P

- Specifically designed for surgical locations where space or access is limited
- Working mode: Manual
- Patient scope: from Pediatric to Adult (3kgs over)
- Tidal volume: 20~1500ml
- Working pressure: O₂:0.3—0.4Mpa, N₂O:0.3—0.4Mpa
- Flowmeters: 2 tube 2 gas flowmeter
- O₂ range: 0.1~10L/min
- N₂O range: 0.1~10L/min
- O₂ and N₂O linkage device (ORC system), FiO₂ ≥ 25%
- APL valve adjustment range: 0.5~6.0Kpa
- O₂ Flush: 30~60L/min



Medical Ventilator

AR-203

- Display mode: High-definition 10.4" TFT color LCD screen
- Ventilation mode: IPPV, SIPPV, SIMV, PEEP, MANUAL, SIGH (IMV, VCV, PCV, PSV, CPAP)
- Tidal volume: 50~1500 ml (20~1500 ml)
- Rate: 1~99bpm
- SIMV rate: 1~20bpm
- I:E: 2:1~1:8 (4:1~1:8)
- Inspiratory trigger pressure: -1.0~2.0Kpa
- PEEP: 0~2.0Kpa
- Pressure range: 1.0~6.0Kpa
- SIGH: 1.5 times the inspiratory time (70-150 adjustable)
- Inspiratory platform: 0~50%
- Monitoring of oxygen concentration: 21%~100%
- Security Alarm System
- UPS, Storage battery, Air compressor



Medical Ventilator

AR-201

- Display mode: High-definition 5.7" LCD screen display
- Ventilation mode: IPPV, SIPPV, SIMV, PEEP, MANUAL, SIGH
- Tidal volume: 50~1500ml
- Rate: 2~99bpm
- SIMV rate: 2~20bpm
- I:E: 2:1~1:8
- Inspiratory trigger pressure: -1.0~2.0kPa
- PEEP: 0~2.0kPa
- Pressure range: 1.0~6.0kPa
- SIGH: 1.5 times the inspiratory time
- Security Alarm System
- UPS, Storage battery

Infant Ventilator

AR-Y200

- Modes: CMV / IMV / CPAP / Manual
- Breath rate: 1~120 bpm
- Inspiratory to Expiratory Ratio: 1:1 ~ 1:3 (Special order I:E range: 10:1 ~ 1:9.9)
- Inspiratory flow: 3 L/m~20 L/m
- Oxygen Concentration of Output Gas: 21~100%
- PEEP: 0kPa~2.0kPa
- Inspiration pressure: 1 kPa~9kPa
- Inspiration time: 0.2 seconds~3.0 seconds
- Tidal volume: Minimum 10 mL~300mL
- Maximum Safe Pressure: not greater than 10kPa
- CPAP: 0kPa ~ 2.0kPa
- Monitoring Oxygen Concentration: 21% ~ 100%
- Security Alarm System



Portable Ventilator

AR-100C

- Modes: CMV(IPPV) A/C(SIPPV) SIMV SPONT PEEP (Choice of suppliers)
- Tidal Volume: 50~1200ml
- Breath Rate: 5~60 bpm
- PEEP: 0~2KPa
- O₂ Concentration: 45~90%
- Sigh: 1~10 per 100 breath
- Peep: 10-60 hpa (Choice of suppliers)
- Trigger Level: -10~0hpa
- Over Pressure Relief: <6kpa
- High Pressure Alarm Limit: 2~6kpa flash, red indicator
- Low Pressure Alarm Limit: 0.2~2kpa Red indicator
- Alarm Silence: 120 sec
- Battery: Can be used for 8 hours



Portable Ventilator

AR-100D

- Modes: C, A/C, SIMV, SIGH, CPAP, PEEP
- Tidal Volume: 50--2000 ml
- Respiratory Rate: 1--100 bpm
- O₂ Concentration: 45--100%
- Trigger Level: -20--0 hpa
- Peak Pressure: 0--60 hPa
- PEEP: 0--20 hPa
- SIGH: 1--10 times per 100 breath
- Self Test function: Circuit Connect Prompt, Sound Alarm Test, Gas Pressure Test, Internal Battery Capacity Test, Circuit Leakage Test
- Alarm: High/Low Airway Pressure, Low Battery Voltage Alarm, Low Gas Pressure, Parameter Error, Silence, High Frequency Alarm
- Battery: Can be used for 8 hours



Portable Ventilator

AR-10

- Breath Rate: 10 15 20 25 30 35bpm
- I:E: 2:1 1:1 1:1.5 1:2 1:2.5 1:3
- Tidal Volume: 300 ~ 1000 ml
- AC Voltage: 110V~240V
- DC Voltage: 12V
- Inlet Battery: 12V , 2Ah



Defibrillator

DEF-9000A / DEF-8000A

- Output waveform: DEF-9000A: Monophonic technology
DEF-8000A: Biphasic technology
- Non-synchronizer: External defibrillator
- Energy: 0,20,50,100,160,250,300,360 joule
- Charging time: At 360J less than 10 sec
- Paddle: Reusable external adult paddles
(pediatric paddles integrated)
- Battery: Charge 3.5h to full
- Full charge to 35 shocks (360 Joules)
- Sealed rechargeable 12 volt NIMH battery



Defibrillator

DEF-9000C/ DEF-8000C

- Output waveform: DEF-9000C: Monophonic technology
DEF-8000C: Biphasic technology
- Defibrillator type: Manual, Synchronized, Asynchronized
- Defibrillator Energy accuracy: < +1%
- Defibrillator Energy selection:
0,3,5,7,10,20,30,50,100,200,300,360 joule (nominal at a resistance of 50)
- Defibrillator Charging time: Maximum 8 seconds to 360 Joules
- Battery Charging time: Time-Minimum of 4 hours for full charging
- Battery Capacity: 100% of the battery will provide 120 mins of monitoring;
and 30 discharges at 360 joules
- Display LED Dimensions: 7' diagonal {155mm*88mm}
- ECG lead: I, II, III, AVR, AVL, AVF, V1-V6, GND
- Respiration Measurement method: Thoracic impedance
- NIBP Working mode: Manual/Automatic/stat (5 minutes)
- Temperature Measurement range: 20~45°C
- Pulse Oximetry Display: Spo2 value, pulse histogram, waveform, Pulse
- Pulse range: 0-255bpm
- Optional: Recorder



Defibrillator

DEF-9000D/ DEF-8000D

- Output waveform: DEF-9000D: Monophonic technology
DEF-8000D: Biphasic technology
- Defibrillator type: Manual, Synchronized, Asynchronized
- Defibrillator Energy accuracy: < +1%
- Defibrillator Energy selection:
0,3,5,7,10,20,30,50,100,200,300,360 joule(nominal at a resistance of 50)
- Defibrillator Charging time: Maximum 8 seconds to 360 Joules
- Battery Charging time: Time-Minimum of 4 hours for full charging
- Battery Capacity: 100% of the battery will provide 120 mins of monitoring;
and 30 discharges at 360 joules
- Display LED Dimensions: 7' diagonal {155mm*88mm}
- ECG lead: I, II, III, AVR, AVL, AVF, V1-V6, GND
- Respiration Measurement method: Thoracic impedance
- Optional: Recorder



Defibrillator

DEF-9000B/ DEF-8000B

- Output waveform: DEF-9000B: Monophonic technology
DEF-8000B: Biphasic technology
- Defibrillator type: Manual, Synchronized, Asynchronized
- Defibrillator Energy accuracy: < +1%
- Defibrillator Energy selection: 0, 20, 50, 100, 160, 250, 300, 360 joule (nominal at a resistance of 50)
- Defibrillator Charging time: Maximum 8 seconds to 360 Joules
- Battery Charging time: Time-Minimum of 4 hours for full charging
- Battery Capacity: 100% of the battery will provide 120 mins of monitoring; and 30 discharges at 360 joules
- Display LED Dimensions: 10' diagonal
- ECG lead: I, II, III, AVR, AVL, AVF, V1-V6, GND
- Respiration Measurement method: Thoracic impedance
- NIBP Working mode: Manual/Automatic/stat (5 minutes)
- Temperature Measurement range: 20~45°C
- Pulse Oximetry Display: spo2 value, pulse histogram, waveform, Pulse
- Pulse range: 0-255bpm
- Optional: Recorder



Defibrillator (AED and Manual)

DEF-7000

- Display Screen Size: 7 inches (17.7 cm) diagonally
- Defibrillator Waveform: Biphasic
- AED Mode: Auto analyze and charge x3 with programmable auto energy level selection, screen prompts, and voice prompts
- Manual Mode: Energy selectable at 2, 5, 7, 10, 20, 30, 50, 70, 100, 150, 200, 300, 360 joules
- Battery Operating Time: For a new, fully charged battery: 60 defibrillator discharges at maximum energy, or 3 hours minimum of continuous ECG monitoring
- ECG Monitoring
- Pulse Oximetry (SPO2) Monitoring
- Heart Rate: 20-300BPM
- Recorder

Automated External Defibrillator (AED)

AED-7000

- Pulse Type: Biphasic Waveform
- Extensive voice and visual prompts for the operator
- Defibrillator Energy Sequence: 150, 150, 200J
- Defibrillator Charge Time: 4sec. to 150J, 8 sec. to 200J
- Defibrillator Analysis Time: 4-16 sec.
- Combined Analysis and Charge Time from power up after 6 shocks
- From start of analysis to shock ready: Less than 20 seconds to 150 J, Less than 30 seconds to 200 J
- Audible Prompts: 20 audible prompts
- Visual Prompts: LED prompts
- Output Energy Accuracy: ±15% or ±3J (whichever is greater) to any impedance from 25 to 175Ω
- Battery: Non-Rechargeable LiMnO2 12V, 3.0 Ah
- Battery Capacity: 100 discharges at 200 Joules or 120 discharges at 150 Joules



Electrosurgical unit

ESU-2000AI (LCD)

- Max 400W Electrosurgical Generator, with mono-polar and bipolar function
- Nine working modes: pure cut, blend1, blend2, blend3, contact coag, forced coag, soft coag, bipolar coag, bipolar cut
- Both hand and foot controlled
- Microprocessor controlled, LCD touch screen display

Working Modes	Mono-polar Cut	Pure cut	1W~400W (Load 800Ω)
		Blend1	1W~300W (Load 800Ω)
		Blend2	1W~200W (Load 800Ω)
		Blend3	1W~150W (Load 800Ω)
	Mono-polar Coag	Spray Coag	1W~80W (Load 800Ω)
		Forced Coag	1W~120W (Load 800Ω)
		Soft Coag	1W~120W (Load 800Ω)
	Bipolar	Bipolar Coagulation	1W~70W (Load 200Ω)
		Bipolar Cut	1W~120W (Load 200Ω)



Electrosurgical unit

ESU-350A

- Suitable for various surgical operations of cutting or/and coagulation to organism tissue
- Working Environmental temperature range of electrosurgical unit: 5°C-40°C
- Relative moisture range: ≤ 80%
- Atmosphere pressure range: 86--106Kpa
- Rated power:

Function	Rated power (Rated load)
Pure cut	350W/500Ω
Blend 1	250W/500Ω
Blend 2	200W/500Ω
Blend 3	120W/500Ω
Point coag	120W/500Ω
Soft coag	--
Spray coag	--
Bipolar Standard coag	50W/100Ω
Bipolar force coag	--



Electrosurgical unit

ESU-L2000(LEEP)

- Microcomputer control
- ESU-L2000(LEEP) generator adopts LEEP which specializing in gynecological intrauterine event, increasing the accuracy, controllability, security of the surgery

Five working modes:

Working Modes	Mono-polar Cut	Pure cut	1W~200W (Load 500Ω)
		Blend1	1W~150W (Load 500Ω)
		Blend2	1W~100W (Load 500Ω)
	Mono-polar Coag	Spray Coag	1W~120W (Load 500Ω)
		Forced Coag	1W~80W (Load 500Ω)

Surgical Smoke Evacuation

- Blowing rate: 100 L/min @ 6mm tube
- Noise: <60dB(A)
- Suction Adjust: 10%~100%
- Stop delay time: 0~60s
- Filter Characteristics: 99.999% @ 0.1-0.2μm
- Active Carbon: 97% @ 1 year



Handheld Multi-Parameter Monitor

AM-I

- Touch screen, 5.0 inch color TFT-LCD
- Five parameters: ECG, NIBP, SPO2, TEMP
- Build-in rechargeable Li-battery, up to 15 hours running time, support AC and DC power
- Adjustable audible and visual alarms, and sensor off alarm
- Long time monitoring and sleeping monitoring
- Storage and review data up to 3888groups via Trend Graph and Trend List
- USB and Bluetooth data upload
- Horizontal and vertical display selectable
- Back light can be adjusted
- Free advanced software are all standard on free (Bluetooth software; VSDV software for download the storage data; Guardian software for transmitting the real-time data and storing all data and waveform; Health aids software for Android mobile)
- Optional Bluetooth printer



Patient Monitor

ARI-800A

- 7 inch TFT color LCD display with adjustable brightness
- Six Standard parameters: ECG, RESP, NIBP, SPO2, 2_TEMP, PR/HR
- Suitable for adult, pediatric and neonatal patient
- Multi-display selectable display modes
- Customize all kinds of languages
- Update system software freely and remotely
- High capacity storage, power-off data protection
- Built-in rechargeable Lithium battery for long-term monitoring

Standard configuration:

ARI-800A: ECG+RESP+NIBP+SPO2+2_TEMP+PR/HR

Optional parts: Carry Bag+EtCO2+Central Monitoring Software



Patient Monitor

ARI-800B

- 12.1" high resolution color TFT LCD display
- 13 Type Arrhythmic Analysis, Multi_Lead ECG Waveforms Display in Phase, Real time S_T segment analysis, pacemaker detection Drug calculation and titratiotable
- Efficient resistance to interference of defibrillator and electrosurgical cautery
- SPO2 can testing for 0.1% Weak
- RA-LL impedance Respiration
- Trend Coexist Display
- OxyCRG DyNamic View Display
- Bed to Bed view Display
- Networking capacity and nurse_calling system
- UP to 4 hours working capacity of built_in rechargeable battery
- Large volume of tabular and graphic trends information storage and easy to recall
- Anti-ESU, anti- defibrillator
- Capture dynamic waveforms

Standard configuration:

ARI-800B: ECG+RESP+NIBP+SPO2+2_TEMP+PR/HR

Optional parts: Printer, IBP, VGA and EtCO2



Patient Monitor

ARI-800C

- 12.1" high resolution color TFT LCD display
- 13 Type Arrhythmic Analysis, Multi_Lead ECG Waveforms Display in Phase, Real time S_T segment analysis, pacemaker detection Drug calculation and titratiotabl
- Efficient resistance to interference of defibrillator and electrosurgical cautery
- SPO2 can testing for 0.1% Weak
- RA-LL impedance Respiration
- Trend Coexist Display
- OxyCRG DyNamic View Display
- Bed to Bed view Display
- Networking capacity and nurse_calling system
- UP to 4 hours working capacity of built_in rechargeable battery
- Large volume of tabular and graphic trends information storage and easy to recall
- Anti-ESU, anti- defibrillator
- Capture dynamic waveforms

Standard configuration:

ARI-800C: ECG+RESP+NIBP+SPO2+2_TEMP+PR/HR

Optional parts: Printer, IBP, VGA and EtCO2



Patient Monitor

ARI-800B+

- 15" high resolution color TFT LCD display
- 13 Type Arrhythmic Analysis, Multi_Lead ECG Waveforms Display in Phase, Real time S_T segment analysis, pacemaker detection Drug calculation and titratiotable
- Efficient resistance to interference of defibrillator and electrosurgical cautery
- SPO2 can testing for 0.1% Weak
- RA-LL impedance Respiration
- Trend Coexist Display
- OxyCRG DyNamic View Display
- Bed to Bed view Display
- Networking capacity and nurse_calling system
- UP to 4 hours working capacity of built_in rechargeable battery
- Large volume of tabular and graphic trends information storage and easy to recall;
- Anti-ESU, anti- defibrillator
- Capture dynamic waveforms

Standard configuration:

ARI-800B+: ECG+RESP+NIBP+SPO2+2_TEMP+PR/HR

Optional parts: Printer, IBP, VGA and EtCO2



Electrical Surgical Pendant

T.IB

- The control cabinet of the tower crane adopts the imported high-strength aluminum alloy of patent technology for the one-off extrusion molding, and the surface undergoes the primary oxidation treatment.
- Aluminum molding tray with non-slip texture.
- Mechanical friction damping brake.
- The imported electrical machine is adopted, and the rising and rotation function of the electric horizontal cantilever can accurately position without excursion.
- The gas pipeline, power supply and computer communication line are separately arranged without interference.
- The imported German standard gas terminal (over 20,000 of inserting and pulling out) is adopted.

Specifications:

- Electric moving up and down
- Horizontal rotation
- Pneumatic brake & damper device
- One AIR\O₂\VAC\N₂\AGSS
- Four power outlets; one network outlet
- High carrying capacity

Basic Configuration:

One discharge device (German style) for compressed air, oxygen, nitrous oxide, suction gas and anesthetic gas respectively, four power outlets, one network outlets (Optional gases)



ICU Surgical Pendant

T.IIA/IIC

- The cross arm and control cabinet of the tower crane adopt the imported high-strength aluminum alloy of patent technology for the one-off extrusion molding, and the surface undergoes the primary oxidation treatment.
- Pneumatic brake plus mechanical friction damping brake.
- The gas pipeline, power supply and computer communication line are separately arranged without interference.
- The imported (GENTEC) brand German standard gas terminal (over 20,000 of inserting and pulling out) is adopted.
- Dry and wet areas adopt the independent design, and equip with the gas cabinet body.
- The horizontal rotation function can accurately position without excursion.

Specification:

- Combination of T.IIA and T.IIC
- Horizontal rotation
- Pneumatic brake & damper device
- One AIR\O₂\VAC for each
- Four power outlets for each; one network outlet for each
- Separate dry and wet sections

Basic Configuration:

One discharge device (German style) for oxygen, suction gas and compressed air, four power outlets, one network outlets (Optional gases)



Whole Reflector Shadowless Lamp

AML700/700-III

- Illumination: 80,000-160,000LX x2(at 1m distance)
- Facula diameter: $\phi 100\sim\phi 280\text{mm}$
- Depth of light beam: $\geq 600\text{mm}$
- Brightness adjustment: 8-stage continuous
- Shift of major and stand by lamps: automatic
- Color temperature: $4500\text{K}\pm 500\text{K}$
- Temperature rise: $\leq 12^\circ\text{C}$
- Temperature rise on the head of patient: $\leq 2^\circ\text{C}$
- Diameter of lamp holder: $700\text{mm} \times 2$
- Mains voltage: $\text{AC}220\text{V}\pm 20\%$ 50Hz
- Bulb voltage: AC24V
- Bulb power: 150W $\times 2$
- Input power: 200VA $\times 2$
- Height for installation: 280-320cm



12/5 Reflector Shadowless Lamp

AML1205L

- Major bulb illumination: $\geq 130,000\text{LX}$
- Stand by bulb: $\geq 60,000\text{LX}$ (at 1m distance)
- Color temperature: $4500\text{K}\pm 500\text{K}$
- Mains voltage: $\text{AC}220\text{V}\pm 10\%$ 50Hz
- Bulb voltage: AC24V
- Bulb power: 425W
- Input power: 500VA
- Height for installation: 280-320cm



5 Reflector Shadowless lamp

AML05L.III (Stand Type)

- Illumination: $\geq 60,000\text{LX}$ (at 1m distance)
- Color temperature: $4000\text{K}\pm 500\text{K}$
- Mains voltage: $\text{AC}220\text{V}\pm 10\%$ 50Hz
- Bulb voltage: AC24V
- Bulb power: 125W
- Input power: 150VA



1 Reflector Shadowless lamp

AML01L.III (Ceiling Type)

- Illumination: $\geq 25,000\text{LX}$ (at 1m distance)
- Color temperature: $3000\text{K}\pm 500\text{K}$
- Mains voltage: $\text{AC}220\text{V}\pm 10\%$ 50Hz
- Bulb voltage: AC24V
- Bulb power: 50W
- Input power: 60VA

LED Shadowless Lamp

SY02-LED5+5

- Central illuminance: 160,000 Lux /160,000 Lux
- Spot diameter: 200 -350 mm
- Color temperature: 4500 K
- Color reduction index: 96
- Service life of illuminant: 30,000h
- Total irradiance each lamp head: 510W/m²
- Definition: ≥600 TVL
- SNR: ≥46db
- Camera shooting distance (m): 0.8~2
- Foci: F3.66~91.36 mm
- Double ratio: 22 double
- Video frequency export: 1.0Vp-p75Ω
- Lowest height of installation: 3100 mm



LED Shadowless Lamp

AML760/760

- Illuminance: ≥160,000Lux/≥160,000Lux
- Colour temperature: 4500±200K
- Colour reduction index (Ra): 96
- Illuminance depth: 700mm/700mm
- Total irradiance: 510W/m²
- Size of light field: 180-260mm
- Lamp head diameter: 760mm/760mm
- Rated power of bulb: 3.2V/1W
- Service life of illuminant: 50,000h
- Power supply voltage: AC 110-240v, 50/60Hz
- Lowest height of installation: 2900mm
- Total power consumption: 200W
- Total LED bulb quantity: 262 pcs



LED Shadowless Lamp

YD02-LED4S

- Illuminance: ≥ 100,000 Lux
- Color temperature: 4800±200 K
- Total irradiance: 420W/m²
- Spot diameter: 120mm~240mm
- LED bulb: 3.8V
- Input power: 100VA



LED Examination Lamp

YD01A LED (Mobile)

- Illuminance: 30,000Lux 0.5m/5,000Lux 1m
- Color temperature: 4800±200K
- Size of light field: 100mm
- Adjust: adjust light
- Power supply voltage: 220V/50Hz
- Rated power of bulb: 3.3/3w
- Crutch: adjust up/down
- Bulb: LED bulb

Electric Operation Table

AMT-D.IV

- Length: 2000 ±50mm
- Width: 500 ±20mm
- Min-max height: (680-1030) ±50mm
- Forward: ≥ 12°; Backward: ≥ 12°
- Leftward: ≥15°; Rightward: ≥ 15°
- Head board Upward: ≥ 60°; Downward: ≥ 90°
- Seat board Upward: ≥ 75°; Downward: ≥ 20°
- Leg board Upward: ≥ 15°; Downward: ≥ 60°
- Head swap back panel power folding Upward: ≥ 75°; Downward: ≥20°
- Foot board Downward: ≥75°; Angel of furcation: ≥180°
- AC/DC
- Imported Germany hydraulic engine
- Imported electromagnetic valve, ring & sensor
- Auto restoration
- Hand/panel control
- Do X-ray & C-arm



Electric Operation Table

AMT-D.IA

- Length: 2000±50mm
- Width: 500±20mm
- Min-max height: (550-850) ±20mm
- Trendelenburg: ≥20°; Rev-Trend: ≥15°
- Leftward: ≥15°; Rightward: ≥15°
- Head board fold upward: ≥40°; fold downward: ≥90°
- Backboard fold upward: ≥75°; fold downward: ≥20°
- Leg board fold outward: ≥90°; fold downward: ≥90°
- Mains voltage: AC220±10%, 50HZ
- Input power: 500VA
- Waist board lifting: 120mm
- Imported hydraulic engine, electromagnetic valve and sealing ring
- Ultra-low position for long time operation
- Do X-ray
- Leg board is separated & dischargeable
- Waist can be lifted



Multifunctional Operation Table

3008C

- Length: 2050 ±50mm
- Width: 480 ±20mm
- Height: (750-950)mm ±50mm
- Forward: ≥30°; backward: ≥25°
- Leftward: ≥20°; rightward: ≥20°
- Head board Fold upward: ≥30°; Fold downward: ≥90°
- Back board Fold upward: ≥80°; Fold downward: ≥10°
- Leg board Fold downward: ≥90°; Fold outward: ≥90°
- Waist board elevation: ≥120mm
- Base is stainless steel
- Leg board is separated & dischargeable
- Double-decked can do X-ray



Universal Operation Table

JY.B

- Length: 2000 ±50mm
- Width: 480 ±20mm
- Min-max height: (700-950) ±50mm
- Forward: ≥20°; backward: ≥15°
- Leftward: ≥15°; rightward: ≥15°
- Back board Folding upward: ≥75°
- Head board Fold upward: ≥35°; Fold downward: ≥40°
- Leg board Folding downward: ≥90°
- Waist board elevation: ≥80mm



Multifunctional Obstetric Operation Table

AMT-2C

- Length: 1900 ±50mm
- Width: 600 ±10mm
- Height: (750-950) ±50mm
- Back section fold upward: ≥60°; Fold downward: ≥5°
- Forward: ≥10° Backward: ≥20°
- Back section: 800×600mm
- Seat section: 410×600mm
- Auxiliary table: 600×600mm
- Auxiliary table is dischargeable



Obstetric Bed

AMT-3A

- Length: 1900 ±50mm
- Width: 600 ±20mm
- Height: 800 ±20mm
- Back section fold upward: ≥50°; fold downward: ≥15°
- Seat section fold upward: ≥30°; fold downward: ≥8°
- Leg board fold upward: ≥30°; fold downward: ≥30°
- Stainless steel





Mobile Electric Suction Unit

23C.I

- Power voltage: AC 220V±10% 50Hz
- Negative pressure: $\geq 0.09\text{Mpa}$ (680mmHg)
- Suction rate: $\geq 25\text{L/min}$ (35L pump suitable)
- Negative pressure range: 0.013-0.09Mpa (680mmHg)
- Suction bottle: 2500mlx2
- Input power: 400VA
- Pump structure: Diaphragm type
- Noise: $\leq 55\text{dB}$
- Working type: intermittent loading, continuous operation



Gynecological Electric Suction Device

23C.V

- Power voltage: AC 220V±10% 50Hz
- Negative pressure: $\geq 0.09\text{Mpa}$ (680mmHg)
- Suction rate: $\geq 25\text{L/min}$
- Negative pressure range: 0.013-0.09Mpa (680mmHg)
- Suction bottle: 2500mlx2
- Input power: 150VA
- Pump structure: Diaphragm type
- Noise: $\leq 55\text{dB}$
- Working type: intermittent loading, continuous operation



Emergency Portable Suction Unit

23B.II (AC/DC)

- Power voltage: AC 220V±10% 50Hz, DC 12V
- Negative pressure: $\geq 0.09\text{Mpa}$ (680mmHg)
- Suction rate: $\geq 20\text{L/min}$
- Negative pressure range: 0.013-0.09Mpa (680mmHg)
- Suction bottle: 1000ml
- Input power: 150VA
- Pump structure: oil-free self-lubricated pump
- Noise: $\leq 50\text{dB}$
- Working type: intermittent loading, continuous operation



Large Flow Electric Suction Apparatus

YX980D

- Max vacuum: $\geq 0.09\text{MPa}$ (680mmHg)
- Adjustable vacuum range: 0.02MPa~0.09MPa
- Flow rate: $\geq 80\text{L/min}$
- Noise: $\leq 60\text{dB}$
- Jar: 4000mlx2+2000mlx2(PC)
- Power supply: AC220, 50Hz
- Input power: 280VA
- Dimension: 44*50*99.5cm
- G.W/N.W: 25kg/22kg

Single Channel Syringe Pump

ASP-1800G (with drug library)

- Applicable syringes: 5ml, 10ml, 20ml, 30ml, 50ml, 60ml of any standard
- Rate mode: 0.1ml/h-2000.0ml/h (0.1ml/h or 1ml/h step)
- Time Mode: SOL. VOL: 0.1-9999.9ml (0.1ml step) TIME: 00:01-99:59min (1min step)
- Dose Mode: Volume: 0.1-999.9ml (0.1ml step) DRUG MASS: 0.1-999.9mg (0.1mg step) DOSE: 0.001-9999 (0.001 step) WEIGHT: 0.1-300kg (0.1kg step)
- Total Volume Range: 0.1-9999.9ml (0.1 ml step)
- Drug library Mode: With drug library
- Purge Rate: Programmable and adjustable
- KVO Rate: 0.0~5.0 ml/h, Programmable and adjustable
- DPS Occlusion Pressure: LOW, MEDIUM, HIGH
- Alarm volume: LOW, MEDIUM, HIGH
- Bolus Rate: 0.1-2000ml/h, Programmable and adjustable
- Bolus Volume Range: 1.0~50.0ml (0.1ml step)
- History records: 2000 events stored can be checked and downloaded
- Built-in Battery: Rechargeable, 12 hours of continuous operation



Dual Channel Syringe Pump

ASP-1800F (with drug library)

- Simultaneous injection with two drugs
- Automatic self-identification of 5ml, 10ml, 20ml, 30ml and 50/60ml syringes
- All kinds of syringe brands
- Real time display
- Injection volume: 0.1~9999.9ml
- Injection rate: 0.1~100ml/h, 5ml; 0.1~300ml/h, 10ml; 0.1~600ml/h, 20ml; 0.1~800ml/h, 30ml; 0.1~1800ml/h, 50ml
- Bolus rate: 50~100ml/h (Default 50ml/h), 5ml; 50~300ml/h (Default 150ml/h), 10ml; 50~600ml/h (Default 300ml/h), 20ml; 50~800ml/h (Default 300ml/h), 30ml; 50~1800ml/h (Default 400ml/h), 50ml
- KVO rate: 0.1~5ml/h, adjustable at increment level of 0.1ml/h
- 5 injection modes: ml/h Mode, Weight Mode, Volume-Time Mode, MTIVA Mode, Intdelivery Mode
- 25 injection speed units
- 3 levels injection pressure for selection: (L) 40KPA, (M) 70KPA, (H) 100KPA
- Alarm: AC power failure, Syringe falls off, Reinstall syringe, Countdown, Air, Occlusion, Low battery, Error, Injection over, No enough drugs, Beyond parameters range
- Rechargeable battery can work continuously for over 4.5 hours
- Auto save previous injection record
- Import Japan motor to ensure the syringe is more accurate



Single Channel Infusion Pump

AIP-1200Y (with drug library)

- Fit IV tubes: Any brand IV set after exactly calibration
- Delivery rate range: 0.1ml/h~1200ml/h
- Delivery time range: 00h01min~99h59min (1 min step)
- Volume limit range: 0.0-9999ml (1 ml step)
- Total Volume Range: 0.0-9999ml (1 ml step)
- Dose Mode: Volume: 0.1-999.9ml (0.1ml step) DRUG MASS: 0.1-999.9mg (0.1mg step) DOSE: 0.001-9999ug/kg/min (0.001ug/kg/min step) WEIGHT: 0.1-300kg (0.1kg the least step)
- Drug library: with drug library, can store 1030 kinds of drugs
- KVO Rate: 0.0~5.0ml/h, programmable and adjustable
- DPS Occlusion Pressure: LOW, MEDIUM or HIGH
- Alarm volume: LOW, MEDIUM or HIGH
- Bolus rate: 1.0~1200ml/h
- Bolus volume: 1.0~100ml
- Purge Rate: Programmable and adjustable
- History records: 2000 events stored can be checked and downloaded



Dual Channel Infusion Pump

AIP-Y1200

- LCD display screen and micro computer controlled
- KVO status: After finishing the total volume of infusion, the pump will switch to KVO status automatically (Keep vein open status)
- KVO Rate: 1-2ml/h
- Audible and visual alarm: Five kinds of alarms including Occlusion alarm, Bubble alarm, Door Open alarm, Infusion Finished alarm and Under-voltage alarm
- Can be used to infuse colorless transparent liquid and high nutrient solutions and color opaque liquid
- AC/DC alternative, built-in NI-MH rechargeable battery (battery work time: 2 hours)
- Two setting modes: drop/min and ml/h
- Infusion flow rate: Specialized infusion apparatus: 0.1ml/h-1200ml/h Ordinary infusion apparatus: 0.1ml/h-600ml/h
- Total infusion volume preset: 0.1-9999ml
- Occlusion sensitivity: three adjustable levels of occlusion pressure
- Reserve call interface



Colposcope

ARI-II Series

Item	ARI-II-L	ARI-II-1L
Observation angle	45° tilted binocular observation unit	
Magnification of eyepiece	16X	
Interpupillary distance	50mm-80mm	
Diopter	±5D	
Focal length of objective	F=300mm(M58x0.75)	
Magnification changer	5-step magnification change: 0.4X, 0.66X, 1X, 1.5X, 2.5X	
Total magnification	2.7X, 4.4X, 6.6X, 10X, 16.6X	
Linear field	90mm, 55mm, 37mm, 24mm, 15mm	
Beamsplitter	50:50	
TV adapter	C-mount 1/3" CCD camera attachable	
Fine focusing distance	20mm	60mm
Balance arm	Counterweight adjustable	No
Illumination system	Coaxial illumination with 10W LED light source, brightness adjustable	Coaxial illumination with cold light source fiber-optic cable, 24V150W dual halogen lamp, brightness adjustable
Illumination	>20000lux	
Filter	Built-in Green and Blue	
Stand	Short column fitted on the five-star base	Column height adjustable fitted on the round base with 3 jaws. The round base of ARI-II-1L built-in circuit board
Optional accessories	Demonstrator, Camera (MDCCC200, MTV-73X10, C-UV200), Photo adapter, Monitor, Objective (F=230mm & F=280mm)	



Colposcope

ARI-V Series

Item	ARI-V-1	ARI-V-2	ARI-V-3
Observation angle	Straight	45° tilted	45° tilted (with 45° adapter)
Magnification of observation	6 X		
Focal length of objective	F=200mm & 300mm		
Working distance	185mm & 285mm		
Magnification changer	3-step magnification change: 0.6X, 1X, 1.6X		
Total magnification	3X-12X		
Linear field	16mm-61mm		
Fine focusing distance	20mm		
Illumination system	Coaxial illumination with cold light source fiber-optic cable, 21V150W halogen lamp, brightness adjustable		
Filter	Built-in Green and Blue		
Fiber-optic cable	Length: 1300mm		
Stand	Column height adjustable fitted on the round base with 3 jaws		
Optional accessories	Beamsplitter, TV adapter, Demonstrator, Camera (MDCCC200, MTV-73X10, C-UV200), Photo adapter, Monitor, Objective F=250mm		



Operation Microscope

AOM-130

- Observation angle: 45° tilted
- Magnification of observation: 6X
- Interpupillary distance: 50mm-80mm
- Diopter: ±5D
- Focal length of objective: F=200mm and F=300mm two objectives
- Magnification changer: 3-step: 0.6X, 1X, 1.6X
- Total Magnification: 3X-12X
- Linear field: 60.8-15.8mm
- Fine focusing distance: 10mm
- Fiber-optic cable: 1700mm
- Illumination: Coaxial illumination with cold light source fiber-optic cable, brightness adjustable

- Lamp: 21V150W halogen lamp
- Filter: Built-in green and yellow filter
- With beam splitter and TV adapter, C-mount 1/3 inch CCD camera attachable
- With 2-part arm, counterweight adjustable and can be locked
- With floor stand
- Power supply: AC220V50HZ/AC110V60HZ
- Optional accessories: Demonstrator, Camera (MDCCC200, MTV-73X10, MTV-73X10H, DC-200, VGA200), Photo adapter, Monitor H1766, Objective F=250mm & F=400mm



Fetal Monitor

AFM-300P2

- 7-inch TFT color LCD Folding up to 90 degree
- Interface of parameters of FHR, TOCO, FM, with digital and curve display
- Build-in line thermal recorder
- Advanced DSP technology, accurate and reliable
- 3 in 1 transducers, no cable intertwisting
- 12 hours data storage which can be played and printed
- Audible and visual alarm signal

Fetal Heart Rate:

- Transducer: Multi-crystals pulsed doppler, high sensitivity
Strength: <math><5\text{mW/cm}^2</math>
- Working frequency: 1.0MHz
- Measurement range: 50~210 bpm
- Alarm Range: High limit: 160,170,180,190 bpm; Low limit: 90,100,110,120 bpm
- Maximum audio output power: 1.5 Watt

TOCO:

- Measurement range: 0~100 units

Fetal Movement:

- Button Hand Count (Automatic cumulative number of movements)

Optional:

- Maternal ECG, SpO₂, HR, NIBP monitoring

Maternal / Fetal Monitor

AFM-600P2

- 12.1-inch TFT color screen Folding up to 90 degree
- Build-in 152mm long life thermal printer
- DSP technology, real time identify and measurement for FHR, accurate and reliable results
- Special high sensitive transducer
- 12 hours data storage which can be playback and printed
- Auto FM testing

Fetal Heart Rate:

- Ultrasound Probe: Multi-crystal, high sensitive
- Ultrasound frequency: 1MHz±5%
- Ultrasound intensity: <math><5\text{mW/cm}^2</math>
- FHR range: 50-210bpm
- Alarm Limit: Upper Limit: 160,170,180,190bpm; Lower limit: 90,100,120bpm

TOCO:

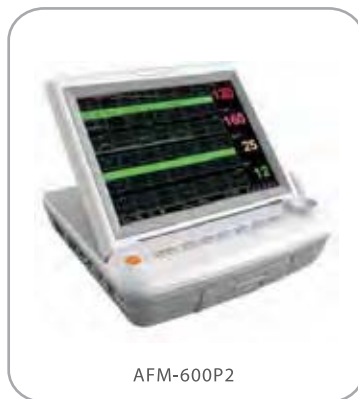
- TOCO range: 0-100 (relative unit)
- Resolution: 1
- Non-linear error: $\leq\pm 5\%$

Fetal Movement:

- Button Hand Count (Automatic cumulative number of movements)

Maternal Monitoring:

- ECG, SPO₂, NIBP, RESP, TEMP, PULSE RATE



Fetal Doppler

AFD-100B

- Large LCD display with blue backlight
- Built-in loudspeaker, more clearly & loudly
- Support 2MHz, 2.5MHz, 3MHz waterproof probe
- Monitor 12 weeks above unborn baby's blood wall pulsates.
- Ultrasound probe: solid and durable, anti-shock, anti-falling down
- Ultrasound frequency: 2/2.5/3 MHz ±3%
- Ultrasound intensity: <math><2.5\text{Mw/cm}^2</math>
- Power: AC 220V 50Hz, built-in 9.6V nickel-hydrogen rechargeable batteries
- Weight: Main body 0.25kg
- Temperature: 5°C-40°C
- Humidity: 0-85%

Fetal Doppler

AFD-200C

- Sensitivity: Monitor 9 weeks fetus
- Speaker: Quality "Sanyo" speaker take more clearly and loudly
- Ultrasound frequency: 3.3 MHz or 2.2 MHz ±3%
- Ultrasound intensity: <math><2.5\text{Mw/CM}^2</math>
- Display: high light LED display real-time FHR
- FHR Scope: 60BPM-210BPM
- Power: AC 220V 50Hz, DC 18V (on request)
- Rechargeable battery: 1100Mah (can work more than 12 hours continuously)

Infant Incubator

AI-3 Plus

- Microprocessor based servo controlled temperature system
- Control modes: Air mode and baby skin mode
- Humidity control system, oxygen concentration control system
- Microprocessor based servo controlled temperature system
- Control modes: Air mode and baby skin mode
- Humidity control system, oxygen concentration control system
- Set temperature, air temperature, baby skin temperature, humidity, oxygen concentration, spo2 and heating power are displayed separately by LCD
- Self-testing function, various failure alarms by audible and visual
- >37°C temperature set function
- Embedded integrated sensor module
- Triple protection for over temperature with separate cut off device, more safety system
- The inclination of infant bed is adjustable
- Double wall hood, 4 operating windows and 2 iris ports
- Independent locking device for front door
- RS232 connector, Oxygen inlet
- 8" color touch screen with skin temperature graph trends
- X ray cassette Tray
- SPO2 monitoring system



Transport Incubator

AIT-1000

- Air mode and Baby mode controlled by micro-computer
- Use AC Power and DC Power alternatively, DC 12V or DC 24V Power on the ambulance
- Set temperature, air temperature, baby temperature and internal battery voltage can be displayed separately
- Double wall hood with side door so that the bassinet can be pulled out from it
- Natural air flow humidity
- The height of whole unit can be adjusted
- Oxygen cylinder and Oxygen supply system
- Observation lamp, adjustable brightness
- Fan with low noise and long life-span
- Temperature deviation and over temperature could be amended in front panel directly
- A second thermal cut-out function for more safety
- Six operating windows, two side access operating windows can be swiveled
- Double wall hood and with white LED observe lamp
- With two oxygen cylinder and oxygen flow meter
- An adjustable height trolley can be optional



Infant Radiant Warmer

AW-1 Top Grade

- Three modes: pre-warm, manual and automatic
- Set temperature and skin temperature display separately
- Anti-explosion micro crystal quartz for radiation source
- Self - testing function, various failure alarms by audible and visual
- APGAR timer to record therapy time
- Convenient X-ray cassette tray under infant mattress
- Heater head can be adjusted $\pm 90^\circ$ horizontally
- Inclination of infant bed is adjustable
- LED observe light angle is adjustable
- Transparent protector can be folded down, with two infusion seals
- RS232 connector
- Built in low pressure aspirator
- LED phototherapy unit
- PVC infant resuscitator



Infant Phototherapy Unit

AL-5 LED

- Irradiance intensity is adjustable in 3 grades: low, middle, high
- LCD screen display therapy time and integral time separately
- Radiant Wavelength: 420~490nm
- Height adjustable range: 850~1640mm
- Pitching angle of phototherapy head: 0~180°
- Radiant head size: 380*220mm
- Life span of LED bulbs: at least 20000 hours
- Blue LED bulbs: 17pcs
- Integral time range: 0~9999.9h
- Count down timer: 0~8h 30min
- Total irradiance for bilirubin (effective surface area 500*360mm at 360mm):
High: 2800 μ W/cm²
Middle: 2000 μ W/cm²
Low: 800 μ W/cm²
- Four castors with brake, magal and steel support base
- Using together with infant incubator, infant warmer, baby cradle



Double Infant Phototherapy Unit

AL-500 LED

- Small in size, light and high irradiation
- Circle 360 double sides for more effective radiation
- Upside phototherapy and Downside phototherapy can be use separately
- Blue light wavelength: 420mm ~ 490mm
- Circle 360 light radiation: 3700 μ W/cm²
- Downside light radiation: 2400 μ W/cm²
- Life span of blue light tube: >20000hours
- Air Temperature display range: 0 ~ 45°C
- Skin Temperature display range: 0 ~45°C
- Time accuracy: 1min/2h
- Count-up time range: 0 ~ 99.9 hours
- Count-down time range: 1min ~ 99.9 hours
- Total cumulative time: 999999 hours
- Mattress size: 613*300mm



Standard Configuration

- Main body (including the radiant source, control system, infant bed, bracket), IV pole, skin temperature sensor, air temp sensor, tray, mattress, transparent protector, castors, two drawers.

Portable Color Doppler Ultrasound Scanner

AR-580B (4D optional)

- Displaying mode: B, B/B, 4B, B/M, M, PW, B/C, B/C/D, B/D, duplex, triplex, CFM, CW (optional)
- General measurement: B mode-distance, circumference, area, volume, angle, area Red, Diam Red, M mode- distance, time, velocity, heart rate
- Abdomen measurement: Liver, GB, Aorta, GBWT, CBD, Portal Vein, Spleen
- OB packages: EDD table, GS, BPD, CRL, FL, YS, TAD, LV, OFD, NT, AC, HC, APAD, Cxlength
- Gynecological packages: Uterine measurement (Uterine diameter, uterine endometrial); left/right ovary measurement; left/right sacculus measurement; Cervix; Uterine depth
- Urology packages: Left/right kidney measurement, Volume, Cortex
- Small parts Measurement: Left/ right thyroid, volume, Isthmus and calculating report
- Cardiac Measurement Package: Heart rate, Valve speed, LV, aortic, mitral, ventricular
- Skeletal & Muscles: Skeletal & Muscles, distance, area, Hip angle
- Vascular: Senosis D, senosis A, Lt/Rt VVA, Lt/Rt Rulb, Lt/Rt ICA
- Scanning depth: 300mm
- Body mark: Abdominal, Cardiology, Gynecology, Obstetrics, Small parts
- Input/output ports: VGA, USB port, DICOM port
- 4D function and 4D probe optional

Standard Configuration

Main unit, 12 inch LCD monitor, 3.5Mhz convex probe, 2 probe connectors, hard disk, battery, DICOM 3.0



Portable Full Digital Ultrasound Scanner

AR-9000B

- Full digital image technology
- Display mode: B.B/B.B/M.M
- 10 inches high resolution line by line monitor
- Multi-frequency probe on ultrasound diagnostic system
- Software measurement: heart, obstetrics, gynecology and urology
- Large capacity, cine memory
- Image store function
- Image zoom function

Standard Configuration

Main unit, 10 inches high resolution line by line monitor, multi-frequency convex probe, cine memory, image store, USB connector



Laptop Full Digital Ultrasound Scanner

AR-3000E1

- | | |
|--|--|
| <ul style="list-style-type: none"> -Display: 15 inches high-resolution LCD -Scanning Mode: Electronic convex array, Electronic linear array -Display Mode: B, B/B, B/M and M -Magnification: x0.8, x1.0, x1.2, x1.3, x1.5, x1.6, x1.8, x2.0 -Gray Scale: 256 -Adjustment: A, B, C, D, E, F, G, H -Resolution: Horizontal≤2mm, Vertical≤1mm -Geometrical Precision: ≤5% -Blind Area: ≤3mm -TGC: 8-section TGC adjustment -Pseudo Colors: Yes -Display Depth: 240mm and depth could be increased | <ul style="list-style-type: none"> -Image Polarity: Left/right, positive/negative and up/down -Cine loop: Successive 256 frames -Output Interface: Three output interfaces: 1 VGA and 2 PAL video signal output -Power Supply Range: AC 110V60Hz, 220V50Hz |
|--|--|

Standard Configuration
Main unit, 15 inches high-resolution LCD, 256-frame cine loop, two probe connectors, Two USB ports, 3.5MHz electronic convex transducer (2.5/5.0MHz)



Mobile Color Doppler Ultrasound Scanner

AR-K10 (4D optional)

- 15 inch high resolution medical LED monitor
- LED light below the monitor
- 180 degree rotatable free arm
- 90 degree rotatable keyboard
- Satellites orbiting type control panel and backlit keyboard design
- Built-in floating standard keyboard
- Special USB interface design on the left side of control panel
- Four probe connectors
- Based on Window XP system, can upgrade the system according to the customer requirement and be compatible with a various of printers
- Crystal clear 2D image and sensitive Color Doppler blood flow imaging system
- Intelligent one touch optimization and report management
- Built-in 500G large capacity hard disc, mass storage
- Real-time 3D&4D synchronization imaging
- B, B/B, 4B, B/M, M, PW, B/C, B/C/D, B/D, duplex, triplex, CFM
- Abundant peripheral (Such as USB, DICOM 3.0, VGA)
- 4D function and 4D probe optional

Standard Configuration

Main Unit, 15 inch LED monitor, 3.5 MHz convex probe, free arm, 4 probe connectors, User's Manual, 500G hard disk, DVD-RW



Mobile Full Digital Ultrasound Scanner

AR-9000D

- Full digital image technology
- Display mode: B.B/B.B/M.M
- 15 inches high resolution line by line monitor
- Multi-frequency probe on ultrasound diagnostic system
- Apply measurement analysis software and reporting system
- Large capacity cine memory
- Image store function
- Image zoom function

Standard Configuration

Main unit, 15inches high resolution line by line monitor, multi-frequency convex probe, cine memory, image store



ECG Machine With Color Screen

ECG-C01G (1 Channel)

- Compact in size, easy and direct operation, portable
- Accurate pace pulse identification and automatic analysis function.
- Four working modes: Manual / Auto / Physical Examination / Storage
- 50mm, single channel format recording
- Freeze function: can replay 12 seconds cardiograph front and back
- Fast ECG test under the [Physical Examination], saving power and paper
- Store and replay cardiograph without printing parameters and diagnosis under the Storage Mode
- Clinical information input (ID/Name/Sex/Age etc.)
- 5" 800×480 graphic 5 inch color LCD
- Adapt to 110-230V, 50/60Hz AC power supply.
- Built in rechargeable Li-MH battery.
- 12 lead waveforms view with 250 patient information storage (extendable)
- Built-in USB, RS232 interface, EXGNET software optional
- USB interface for net transmission, USB flash disk and USB printer



ECG Machine With Color Screen

ECG-C03W (3 Channel)

- Compact in size, easy and direct operation, portable
- Accurate pace pulse identification and automatic analysis function
- Four working modes: Manual / Auto / Physical Examination / Storage
- 80mm, 3 channel format recording
- Freeze function: can replay 12 seconds cardiograph front and back
- Fast ECG test under the [Physical Examination], saving power and paper
- Store and replay cardiograph without printing parameters and diagnosis under the Storage Mode
- 5" 800×480 graphic 5 inch color screen
- Alphabet keyboard fast inputting clinical information
- Adapt to 110-230V, 50/60Hz AC power supply. Built in rechargeable battery
- 12 lead waveforms view with 250 patient information storage (extendable)
- Built-in USB, RS232 interface, EXGNET software optional
- USB interface for net transmission, USB flash disk and USB printer.



ECG Machine With Color Screen

ECG-C06G (6 Channel)

- Compact in size, easy and direct operation, portable
- Accurate pacing pulse identification and automatic analysis function.
- Four working modes: Manual / Auto / Physical Examination / Storage
- 112mm, 6 channel format recording
- Freeze function: can replay 12 seconds cardiograph front and back
- Fast ECG test under the [Physical Examination], saving power and paper
- Store and replay cardiograph without printing parameters and diagnosis under the [Storage] Mode
- 7" 800×480 graphic 7 inch touch screen, fast input patient information
- Adapt to 110-230V, 50/60Hz AC power supply
- Built in rechargeable Li-ion battery
- 12 lead waveforms view with 250 patient information storage (extendable)
- Built-in USB, RS232 interface, EXGNET software optional
- USB interface for net transmission, USB flash disk and USB printer



ECG Machine With Color Screen

ECG-C12B (12 Channel)

- Compact in size, easy and direct operation, portable
- Accurate pacing pulse identification and automatic analysis function
- Four working modes: Manual / Auto / Physical Examination / Storage
- 12 channel format recording
- Freeze function: can replay 12 seconds cardiograph front and back
- Fast ECG test under the [Physical Examination], saving power and paper
- Store and replay cardiograph without printing parameters and diagnosis under [Storage] Mode
- 7" 800×480 graphic 5 inch color screen with Alphabet keyboard input
- Adapt to 110-230V, 50/60Hz AC power supply
- Built in rechargeable Li-ion battery
- 12 lead waveforms view with 250 patient information storage (extendable)
- Built-in USB, RS232 interface, EXGNET software optional
- USB interface for net transmission, USB flash disk and USB printer
- High accuracy thermal printing, adapt to 215mm roll paper and 210×140mm Z-fold paper



Sterilizer (Autoclave)

Vertical Pressure Steam Sterilizer

LX-B35/50/75/100/120/150L

MODEL	LX-B35L	LX-B50L	LX-B75L	LX-B100L	LX-B120L	LX-B150L
Volume	35L	50L	75L	100L	120L	150L
Max Working Temperature	134℃	134℃	134℃	134℃	134℃	134℃
Max Working Pressure	0.22Mpa	0.22Mpa	0.22Mpa	0.22Mpa	0.22Mpa	0.22Mpa
Time Range	0-80min	0-80min	0-80min	0-80min	0-80min	0-80min
Temperature Range (℃)	115-129	115-129	115-129	115-129	115-129	115-129
Sterilization Chamber (mm)	Φ280*477	Φ300*537	Φ360*477	Φ360*622	Φ430*582	Φ430*672
Power	2.5KW	2.5KW	3.5KW	4.0KW	4.0KW	4.0KW



Horizontal Cylindrical Pressure Steam Sterilizer

WS-YDB Series

Model	WS-280YDB	WS-200YDB	WS-150YDB
Sterilizing chamber volume	280L (φ600×1000mm)	200L (φ515×1000mm)	150L (φ440×1000mm)
working pressure	0.22 MPa		
working temperature	134℃		
Adjustment of temperature	40℃ - 134℃		
Time of sterilization	0-99 min		
Time of drying	0-99 min		
Heat average	± 2℃		
Power	12KW/380V 50Hz	9KW/380V 50Hz	9KW/380V 50Hz



Portable Pressure Steam Sterilizer

YX-280D-I

Model	YX-280D-I (18L)	YX-280D-I (24L)	YX-280D-I (30L)
Volume	18L	24L	30L
Max Working Temperature	129℃	129℃	129℃
Max Working Pressure	0.165Mpa	0.165Mpa	0.165Mpa
Time Range	0-999min	0-999min	0-999min
Temperature Range	RT-129℃	RT-129℃	RT-129℃
Sterilization Chamber	Φ280*236mm	Φ280*357mm	Φ280*412mm
Power	AC220V/50Hz/2.0KW	AC220V/50Hz/2.0KW	AC220V/50Hz/2.0KW



Horizontal Pulse Vacuum Sterilizer

WS-Series

Model	Capacity (m3)	Inner chamber Dimension (cm)	Outer Dimension (cm)	Steam pressure and consumption	Water source pressure and consumption	Power	Design pressure	Design temperature
WS-0.25	0.25	80*60*60	110*130*170	0.4-0.8Mpa 15kg	0.15-0.3Mpa 35kg	2+24KW	0.25 Mpa	139℃
WS-0.36	0.36	100*60*60	130*130*170	0.4-0.8Mpa 20kg	0.15-0.3Mpa 40kg	2+24KW		
WS-0.6	0.6	120*61*91	150*135*195	0.4-0.8Mpa 30kg	0.15-0.3Mpa 45kg	3+36KW		
WS-0.8	0.8	150*61*91	180*135*195	0.4-0.8Mpa 40kg	0.15-0.3Mpa 50kg	3KW		
WS-1.2	1.2	150*68*118	179*145*195	0.4-0.8Mpa 48kg	0.15-0.3Mpa 55kg	4KW		
WS-1.5	1.5	190*68*118	219*145*195	0.4-0.8Mpa 60kg	0.15-0.3Mpa 60kg	4KW		
WS-2.0	2.0	170*100*120	200*185*200	0.4-0.8Mpa 65kg	0.15-0.3Mpa 65kg	4.5KW		
WS-2.5	2.5	195*100*140	230*185*220	0.4-0.8Mpa 75kg	0.15-0.3Mpa 75kg	6KW		



Sterilizer (Autoclave)

Table Pressure Steam Sterilizer

YXQ.DY.250B35/50

MODEL	YXQ.DY.250A35/50
Sterilizing chamber volume	35L (Φ300X500mm), 50L (Φ340X550mm)
Maximum working pressure	0.22 MPa
Maximum working temperature	134°C
Adjustment of temperature:	105~ 134°C
Timer	0-60 min
Chamber temperature equal	≤ ±1°C
Source power	2.7KW/AC 220V50Hz (AC110V 50Hz)
Sterilizing plate	(35L)400×200×30mm (4 pieces) (50L)500×250×30mm (4 pieces)
N. W	(35L) 73/90kg, (50L) 86/105kg
Dimension	(35L) 810*680*650mm, (50L) 880*730*700mm



Table Pulse Vacuum Sterilizer

AAL-22L-B (LCD)

Voltage	AC 220V ±10%
Frequency	50/60Hz
Max Hp	1800VA
Physical Space	22L
Class	European Class B standard
Sterilizing temperature	121°C, 134°C
Special sterilization	Kill active HV,HBV,BSE and spore
Dry procedure	Strong vacuum drying, residual humidity <0.2%
Display	LCD, multi-languages
Test	Bowie & Dick, Leak
Safety	Safety valve, Automatic check
Sterilizing record	micro-printer and USB connector optional
Water supply system	Two opened reservoirs: 3.5L fresh water and 5 liter waste water reservoirs
Water quality detection	Detect whether water quality meet the requirement
Clean procedure	Automatic clean inside pipe and steam generator
Instrument containers	5 levels with 3 trays
Chamber size	249mm*450mm/249mm*355mm
Net weight	50Kg/47KG



Dry Heat Sterilizer

GRX Series

GRX series dry heat sterilizer (hot air sterilizer)					
Model	GRX-9023A	GRX-9053A	GRX-9073A	GRX-9123A	GRX-9203A
The power supply voltage	220V 50Hz / 110V 60Hz				
Range of temperature control	RT+10°C-300°C				
Temperature resolution	0.1°C				
Constant volatility	±1°C				
Input power	870W	1120W	1570W	2070W	2470W
working temperature	5°C-40°C				
Inner dimensions(mm)	340×325×320	420×395×350	400×450×450	550×450×550	600×600×650
dimensions(mm)	620×490×490	720×590×520	740×590×630	840×570×730	880×750×825
Loading Bay (standard)	2 blocks				
Scheduled	1-999 minutes				



Ultraviolet Ray Sterilization Trolley

ZXC-II Series

- Wavelength: 253.7nm
- Power Source: AC220V (50HZ)
- Lamp arm adjust angle: 0-135° (II type)
- Timing range: 0-60 mins (II/SG/SGB Type)
- Illumination: ≥90μw/cm²
- Light: PY/XY Type: Quartz light tube 30W*2
SG/SGB Type: Quartz light tube 30W*4



High Speed Centrifuge

HC-20C

- Max RPM: 20000RPM, stepless speed adjustment
- Max RCF: 27800xg
- Time: 0-99min
- Rotor capacity: 1.5/2ml*12 (Standard Rotor 1)
- Brushless frequency motor, LED display speed, RCF and time
- Available different rotors
- Over speed and imbalance alarm
- Rotor identification, electromagnetic door locks
- Touch panel control, the error code display
- LCD display optional



Low Speed Centrifuge

LC-04L

- Max RPM: 4000RPM, stepless speed adjustment
- Max RCF: 2325xg
- Time: 0-99min
- Rotor capacity: 20ml*12 (Standard Rotor 1)
- Strong plastic case
- Brushless motor
- LCD display speed, RCF and time
- Over speed and imbalance alarm
- Touch panel control, automatic stop once lid open
- Error code display, speed up and down adjustment



High Speed Refrigerated Centrifuge

HC-20F

- Max RPM: 20000RPM, stepless speed adjustment
- Max RCF: 27800xg
- Time: 0-99min
- Rotor capacity: Angle rotor 1.5/2ml*12 (Standard Rotor 1)
- Temperature range: -20°C ~ +40°C
- DC brushless frequency motor, LED display speed, RCF and time
- French refrigeration compressor
- Enabling automatic malfunction alarm
- With safety switch and electromagnetic door locks
- Touch panel control, the error code display
- LCD display optional, inverter motor optional



Low Speed Refrigerated Centrifuge

HH-W420

- Max RPM: 4000RPM, stepless speed adjustment
- Max RCF: 2755xg
- Time: 0-99min
- Max capacity: swing rotor 100ml*4, 50ml*8, 15ml*16, 10ml*24
- Temperature range: -5°C ~ +30°C
- DC brushless frequency motor
- French refrigeration compressor
- LED display speed, RCF and time
- Automatic malfunction alarm
- Touch panel control
- With safety switch and electromagnetic door locks
- Error code display



Special Centrifuge

HC-12C (Hematocrit)

- Max RPM: 12000RPM, stepless speed adjustment
- Max RCF: 15300xg
- Time: 0-99min
- Rotor capacity: ϕ 1.5*75mm*24 capillary tubes
- Strong plastic case with metal lid
- High power brushless motor, microcomputer controlling
- LED display speed and time
- Over speed and imbalance alarm
- With mechanical door lock and safety switch
- Error code display, speed up and down adjustment
- With brake and automatic alarm after operation; with reader



Special Centrifuge

MCKS-1200(PRP)

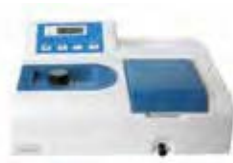
- Max RPM: 12000RPM
- Max RCF: 7900xg
- Time: 0-99min
- Rotor capacity: 1.5ml/0.5ml/0.2ml*6, and 0.2ml*2 PCR tube
- Strong plastic case, with microcomputer control
- DC brushless motor
- LED display speed and time
- Door locked and protection; when open the cover, it will stop
- Include with two kinds of centrifugal rotors, suitable for many kinds of centrifuge tubes and PCR tubes (two rows)



Spectrophotometer

UV-752

- Optical system: CT grating monochromatic
- Wavelength range: 195 nm - 1020nm
- Wavelength accuracy: \pm 2 nm
- Spectral bandwidth: 5 nm
- Wavelength repeatability: 1 nm
- Stray light: \leq 0.3%T @220nm
- Photometric accuracy: \pm 0.5%T
- Photometric repeatability: 0.2%T
- Stability: \pm 0.004 A/h @500nm
- Work Pattern: T, A, C
- Display area: 0 - 200%T, - 0.3 - 3A
- Display modes: 4 LCD
- Zero setting automatic



PCR Analyzer

A600 Super Gradient

- Block Capacity 6*16wells*0.2 individual module, six different annealing temperatures could be set for each zone
- Tube Type: 0.2ml PCR tubes, 8/12 Strips, 96 wells PCR plate
- 7" Color Touch Screen, graphically display the real-time protocols and running status
- Communications Ports: 2 USB and 1 LAN
- Venting System: Front air in and back air out, two cyclers can be placed side by side
- Max. Heating Rate: 5.5°C/s
- Max. Cooling Rate: 4.5°C/s
- Gradient Range: 0°C ~ 105°C
- Max no of programs: Max 15,000 programs onboard, unlimited storage of protocols with USB flash drive





Water Bath

HH-W420

- Power: 1000W
- Temperature range: RT-100°C
- Temperature fluctuation: $\pm 1^\circ\text{C}$
- Temperature uniformity: $\pm 1^\circ\text{C}$
- Working size (cm): 40×18×13
- Package size (cm): 52×33×32



Vortex Mixer

XH-II

- Power Supply/Voltage: 220V 50/60Hz
- Power consumption: 30W
- Oscillating Frequency: Sequent 2800rpm; inching 2800rpm
- Area of the working surface: 6.2×24mm



Water Bath Shaker

SHA-C (Reciprocating)

- Oscillation frequency: Startup~300r/m
- Temperature range: RT~100°C
- Temperature accuracy: $\pm 1^\circ\text{C}$
- Mode of oscillation: Reciprocating type
- Amplitude: 20mm
- Timing range: 5-120minutes (or often opened)
- Heating power: 1500W



High Speed Homogenizer Mixer

FSH-2A

- Max speed: 20000rpm
- Big Homogenate knife: 8000—18000rpm
- Small Homogenate knife: 8000—20000rpm
- Continuum working time: $\leq 5\text{min}$
- Power: 185W
- Working Capacity (ml): 5ml, 10ml, 15ml, 20ml



Oscillator

HY-4 (Reciprocating)

- Oscillation Frequency: startup-300times/min
- Amplitude: 20mm
- Timing range: 0-120 min
- Power: 60W
- Loading capacity: 20kg
- Shaking mode: Reciprocating



Water Distiller

YAZD-10WS Stainless Steel

- Hydraulic discharge: 10L/h
- Heating power: 7.5KW
- Automatic cut off water
- Power supply: 380V, 50Hz
- Cut off the water supply automatically



Oscillator

KJ201BD

- Used for mixing of RPR testing card
- Stability, noiseless, reasonable rotation speed and compact design
- Working size: 384*248mm
- Timing: 0-15min



Magnetic Heated Stirrer

MHS-A

- Power: 40W
- Heating power: 300W
- Temperature range: RT-200°C
- Speed range: 40~1600rpm, stepless adjust speed
- Time setting range: 0.1-99.9 h
- Touch panel digital display temperature, speed and time.
- With timer and data keep function, the max time is 99.9h



Blood Mixer

KJMR-IV

- Rolling Speed: 12-32 rpm
- Tube quantity per: 1-15 pc
- Tube diameter: $\varnothing 13\pm 0.1\text{mm}$
- Working Disc Diameter: $\varnothing 220\text{mm}$
- Angle of Inclination: 38°



PH Meter

PHS-3C

- PH range: 0-14.00pH
- mV range: 0- $\pm 1999\text{mV}$
- Distinguish rate: 1 mV
- Precision: $\pm 0.1\% \text{F.S}$
- Temperature range: 0-60°C
- Precision: $\pm 0.01 \text{pH}$



Mechanical Pipette

1/8/12-channel (fixed & adjustable)

- Digital display clearly reads volume setting
- The pipettes cover volume range of 0.1µl to 10ml
- Easy to calibrate and maintain with tool supplied
- Design helps avoid repetitive strain injuries
- The low part is available for autoclaving
- 8 and 12 channel pipettes are available for standard 96-well plate



CO2 Incubator

CHP-160

- Capacity/ Power: 160L/ 950W
- Temperature range/ Accuracy: RT+5-50°C; 37°C±0.3°C
- CO2 range/ Accuracy: 0-20%; 0.1%
- CO2 uniformity: When 5%, ±0.1%
- Working size: 500×500×650mm



Microtome

AM-3368

- Section thickness range: 0.5~100µm
- Trimming thickness range: 1~600µm
- Minimum setting value: 0.5µm
- Object feed: 28mm
- Vertical stroke: 60mm
- Specimen retraction range: 20µm
- Specimen clamp rotated at an angle of 360 degrees.
- Maximum specimen size: 50 x 50mm



Stable Temperature and Humidity Incubator

LHP-160

- Microcomputer controls, alarm if over-temperature
- Temperature range: 5~50°C; added humidity: 10-45°C
- Temperature fluctuation: ±0.5℃
- Humidity range: 50-95%RH according to temperature
- Humidity fluctuation: ±7%RH
- Capacity: 160L
- Power: 500W



Dry Oven

DZF

- Microcomputer intelligent digital display temperature control, temperature control accurate and reliable
- Vacuum degree <133Pa
- Temp. fluctuation ±1°C
- Temp. range 50-180°C/50-200°C



Water Purifier

AWP-III

- Capacity: 30L/h
- Buffer disposing; Physical and chemical analysis
- Fine chemistry industry; GC/HPLC
- Inlet water for Ultra-pure water machine
- Aseptic drinking water



Intelligent Biochemical Incubator

80A

- Microcomputer controls, transparent box gate
- Temperature range: 5-50°C
- Temperature accuracy: ±1°C
- Compressor power: 93W
- Heating power: 100W
- Valid capacity: 80L



Water-Jacket Electro-thermal Incubator

GNP-9270

- Intelligent digital display, microcomputer controls
- Stainless steel interior, out-door with observation window
- Temperature range: RT+5~65°C; Temperature fluctuation: ±0.5°C
- Working size: 600×600×750mm
- Power: 770W



Digital Ultrasonic Cleaner

UC-10SD

- Double Adjustable Frequency Digital Ultrasonic Cleaner
- Digital display
- Temperature control range: 0 – 80°C
- Fully microprocessor controlled and programmable
- Very Reliable Industrial-Grade Transducer
- Stainless steel tank
- Over-voltage and over-current protection, Low-level water protection
- Time setting range: 1-480 min



Biological Safety Cabinet

ABS-1500III (Class III)

- Class III Biosafety Cabinet is totally enclosed and gas-tight with ULPA filtered supply and exhaust air. Work is performed with long-sleeved gloves
- The cabinet is kept under negative pressure of at least 120 pa, and airflow is maintained by a dedicated exterior exhaust system
- It can protect the operator, product and environment
- Large Digital LCD display and ergonomically sized control panel
- UV lamp for sterilization
- Pass Box: Double doors with interlock function and UV lamp
- Pressure Meter: Display the pressure of work zone



Blood Bank Refrigerator

ABR-240L

- Upright type, Exterior made from structural plate, interior made from ABS material. Four units Caster are mounted under the bottom
- Two-layer transparent door with inert gas inside, and lockable
- Interior fluorescent lighting
- Adjustable 5-6 units shelves made of quality steel wire
- Temperature printer is standard, Optional chart recorder, blood storage basket
- Capacity: 240L



Laminar Flow Cabinet

ALF- V1800 Vertical

- Sample protection only
- LCD Display: Airflow velocity, UV timer, UV work time, system work time, real time
- Waterproof socket: 2 waterproof sockets are located in the side panel, for optimum convenience of using small devices inside the cabinet
- UV lamp: Emission of 253.7 nanometers for most efficient decontamination
- Transparent side glass windows
- Gas Tap



Low Temperature Freezer

LTF-HL388

- Microprocessor-based temperature controller, -10°C ~ -86°C can be set freely, controlling precision is 1°C, Digital temperature display
- Keyboard lock and password protected configuration page, Delayed start and safe stop interval between restart and being terminated
- Audible and visual alarm: High or low temperature alarm, Power failure alarm, Low battery alarm, Door open alarm, Filter blocking alarm, system failure alarm
- Power supply: 220V 50Hz 1 phase, can be changed as 220V 60HZ or 110V 50/60HZ
- Capacity: 388 liters



Medical Refrigerator

AMR-520L

- Upright type, Exterior made from structural plate, interior made from stainless steel
- Four units Caster are mounted under the bottom
- Two-layer glass door, and inert gas inside, and lockable
- Interior fluorescent lighting
- Adjustable 5-6 units' shelves made of quality steel wire.
- Optional: temperature printer or chart recorder
- Capacity: 520L



Medical Hand Sink

SC-3

- Three Lamps
- Three Mirrors
- Three Sensor faucets
- Optional: Auto Soap Dispenser
- Optional: water heater
- Size: 1000*1000*2000mm



X-ray Radiography System

AR-160A

Power Output	25kW	
Main Inverted Frequency	40kHz	
X-ray Tube	Focus	Big Focus 1.0
		Small Focus 0.3
	Thermal Capacity	212kJ (300kHU)
Speed of Rotary Anode	3000rpm	
Tube Current	200mA	
Tube Voltage	40~125kV	
mAs	0.4~360mAs	
Bucky Grid	Grid Density	103/INCH
	Grid Ratio	10:1
	Focus Distance	120cm
	Stationary 18" × 18"	
Power Supply	380V, 50Hz/60Hz Capacity: ≥30kVA	
Operation Method	Graphic Touch-screen LCD Wireless remote-control exposure	
Option	Console of graphic touch-screen LCD	



X-ray Digital Radiography System

ARI-8200

Output Power	25kW	
Main Inverting Frequency	40kHz	
X-ray Tube	X-ray tube with double focuses	Small focus: 0.6; large focus: 1.3
	Rotating speed of anode	3000rpm
Tube current	200mA	
Tube voltage	40~125kV	
mAs	0.4~360mAs	
Power supply	380V, 50Hz (Optional: 220V, 50Hz)	
U-arm	Vertical Lifting Range	450mm~1700mm (Electric Remote-control)
	Movement Range of distance between focus and screen	1000mm~1800mm (Electric Remote-control)
	Rotating Range	- 40° ~ + 130° (Electric Remote-control)
Photography Bed	Size of Bed Surface	2000mm×650mm
	Height of Bed Surface	≤720mm
	Laterally Movement of Bed Surface	200mm (±100mm, electromagnetically locked)
	Lengthways Movement of Bed Surface	100mm (±50mm, electromagnetically locked)
Digital Detector	Detector type	CCD
	View Field	17×17inch
	Pixel	4K×4K
	Space Resolution	≥3.0LP/mm
	Max Space Resolution	4.6LP/mm
	Pixel Size	108um
Output Grayscale	14bit	
Time of Imaging	7s	



High Frequency Mobile Digital Radiography System

AR-5200

Type	Item	Spec	
high frequency X-ray	Max output power	25kW	
	Main Inverter Frequency	60kHz	
	X-ray tube	Focus	Small focus:0.6; Large focus:1.3
		Rotation anode speed	3000rpm
	Heat capacity	900kJ (1200kHU)	
	Tube current	200mA	
	Tube voltage	40~125kV	
	MAS	0.4~360mAs	
Digital image system	Digital detector	Detector	Amorphous silicon detector
		scintillator	cesium iodide
		View	14"×17"
		Pixel	3000×2400
		Max spatial resolution	3.5LP/mm
	Workstation	Pixel size	144um
		Output gray-scale	16bits
		DQE	75%
		Acquisition module	Gigabit nets collection
		Image processing model	Built-in CONTEXTVISION GOPVIEW XR2 Enhance module, parameters chosen according to particular part
Image information management	Dicom Storage Dicom Print Dicom transmission		



Digital C-arm X-ray System

ARX-7000A

Category	Item	Main Contents
Electrical Performance	High Frequency Inverter Power Supply	Output power: 6.0kW; Inverter frequency: 60kHz
	Automatic, Manual Continuous Fluoroscopy	Tube voltage: 40kV~125kV continuous adjustment Tube current: 0.3mA~4mA continuous adjustment
	Automatic, Manual Intensifying Fluoroscopy	Tube voltage: 40kV~125kV continuous adjustment Tube current: 0.3mA~8mA continuous adjustment
	Radiography Tube Voltage, mA	40kV~125kV 120mA
X-ray Tube	X-ray Tube Special For High Frequency	Rotary anode focus: 0.3/0.6; Anode thermal capacity: 212kJ (284KHU)
Image System	Image Intensifier	TOSHIBA 9" image intensifier
	CCD Camera	Medical use 1 million pixel digital CCD camera
	CCU	Real time collection, horizontal, vertical mirror image, recursive noise reduction can be adjusted continuously, multi-images storage, image patching, last image freeze
	Monitor	19" LCD monitor
Structure Performance	Direction Wheel, Main Wheel	Direction wheel 360°rotation, main wheel ±90°rotation
	C-arm	Motorized forward and backward movement: 200mm Motorized rotation around horizontal axis: ±180° Rotation around vertical axis: ±15° Motorized slip on orbit: 120°(+90°~ -30°) Motorized ascending and descending of pillar: 400mm SID: 1060 mm open: 860 mm arc depth: 700 mm



C-arm X-ray System

AR-M20B

Category	Project	Content
Fluoroscopic Capacity	Photography Max rated capacity	5.0KW
	Fluoroscopic ax rated capacity	Tube Current 4mA, Tube Voltage 120kV
	Automatic Fluoroscopy	Tube Voltage: 40kV~120kV adjust automatically Tube Current: 0.3mA~4mA adjust automatically
	Manual Fluoroscopy	Tube Voltage:40kV~120kV Continuous Tube Current: 0.3mA~4mA Continuous
	Pulse Fluoroscopy	Tube Voltage:40kV~120kV Continuous Tube Current: 4.1mA~8mA Continuous
	Photography Tube Voltage and mA	40 kV~120 kV 20-100mA
	Plate holder Size	200mm×250mm(8"×10")or 250mm×300mm (10"×12")
X-ray Tube	X-ray Tube Special for High Frequency	Fixed anode Dual-focus, small focus: 0.3, Inverter Frequency: 40KHz
Video System	Image Intensifier	Image Intensifier made by TOSHIBA (9")
	CCD camera	1 million pixel
	Monitor	2PC HD Monitor
	Workstation	real-time image collection, specular image, recursive level 0-15 continuously adjustable, last frame frozen, Gamma correction, mass storage, image W/L adjustable, gray-scale conversion, interest district balance, reversal, noise reduction, intensify, smooth, sharpen, compress, enlarge, measurement, label, print and typesetting, DicomSCP, DicomSCU, DicomDIR, Dicom Printing Structure
Structural performance	Directive wheel	±90°revolution can freely change the moving direction of the unit.
	Ascending & Descend	≥400mm
	C-arm	Forward and Backward Movement: 200mm Revolution around Horizontal Axis: ±180° Revolution around Vertical Axis : ±15° Focus screen distance:960mm C-arm opening: 760mm C-arm arc depth: 640mm Slip on orbit: 120°(+90°~ -30°)





Mobile X-ray Machine

ARI-101D

Power Output	5.0KW
Frequency	40KHz
X-Ray Tube	Fixed anode, Focus 1.5
Tube Voltage	40~120KV (interval 1KV)
Tube Current	40~49KV 100mA 1~180mAs
	50~59KV 77mA 1~140mAs
	60~69KV 64mA 1~125 mAs
	70~79KV 55mA 1~110 mAs
	80~89KV 49mA 1~100 mAs
	90~99KV 44mA 1~80 mAs
	100~109KV 32mA 1~63 mAs
	110~120KV 25mA 1~50 mAs
mAs	1.0~180 mAs (46 steps)
Power Supply	220V±10% 50Hz inner-resistance≤1.0
Operation Method	Wire /Wireless control
Built-in battery	With a built-in back up battery to enable taking 200 to 500 pictures after power interruption.



X-ray Mammography System

ARI-9800D

X-ray Generator:

- Complete solid-state high-frequency high-voltage generator.
- Generator Type: High Frequency Inverter 80kHz
- Radiographic Ratings: Large Focal Point 20-35kV/10-510mAs
Small Focal Point 20-35kV/10-100mAs

-Power Rating: 6.2kW

X-ray Tube:

- Focal Spot Size: Dual Focus 0.1/0.3mm
- Target Material: Molybdenum (Mo)
- Port Material: Beryllium (Be)
- High-speed anode drive: 2800/1000rpm
- Target angle: 10°/16°
- Anode Heat Storage: 210kJ (300kHU)
- Anode Cooling: Air cooling
- Filtration: Mo(0.03mm),Al(0.5mm)

Radiographic Stand

- C-arm: Vertical Movement: 590mm
- Center of electric rotating C-arm, automatic return function by one key
- Automatically released after the exposure pressure settings display
- Compression flexible stepless speed.
- Max. pressure : 200N
- Max. travel : 150mm
- Rotations Deg : +90°~-90°
- SID: 650mm

Cassette Image Receptor

- Bucky Device: 18*24cm Bucky drive mechanism,(24cm*30cm optional)
- Grid Ratio: 5:1, 30 Line/cm



X-ray Film Processor

ADF-435A

- Developed film size: 3"x4" – 14"x17"
- Max. developing width: 430mm (17")
- Channel volume: Developer 9L, fixer 9L, water 9L
- Developing speed: 90~450S at option
- Developing temp: 20°C~40°C at option
- Developing capacity: 160pcs/h
- Power: 1.5KW
- Net weight: 105kg

Biochemistry Analyzer

ARI-B6060

- Up to 50 onboard testing items and 300 tests/hour through put:
- Refrigerated reagent compartment
- 8 step auto washing system
- Automatic dilution and retest for abnormal sample
- Automatic probe cleaning, liquid level detection, clot detection & collision protection
- 9 wavelengths: 300-700nm



Hematology Analyzer

ARI-M850 5-DIFF

- 5 part differentiation, 27 parameters
- 1 Scattergrams, 4 Histograms
- Up to 90 samples per hour
- Optical solid state LASER scattering
- High efficient light collector (patented)
- 12.1" TFT Touch Screen
- Original reagent, control and calibration
- Easy to operate: Friendly and Intellective Software
- Auto sample for option



Microplate Reader

ARR-960

- Reading Speed: 5 seconds for 96 well plate
- Filters: 405nm, 450nm, 492nm, 630nm, 4 open positions
- Photometric Range: 0.000-4.000Abs
- Photometric Accuracy: $\pm 1\%$ (0.000-2.000Abs)
- Wavelength Range: 340~750nm
- Calculation Mode: ABS; Cut-off; Linearity; LogX; LogY
- Display: 240*128LCD



Microplate Washer

ARW-520B

- Plate: 48/96 well and trips (U,V, Flat bottom)
- Residual Volume: $\leq 2\mu\text{l}$
- Dispensing volume: Adjustable from 50 to 900 μl
- Wash cycles: 1-16 optional
- Mode of wash: From 1 to 12, row and rank, selectable
- Soak time: Up to 990 seconds adjustable
- Shake time: Up to 990 seconds adjustable
- Channel: 3 channels for washing liquid, 1 channel for waste liquid



Coagulation Analyzer

BCA-1

- Prewarming position: 12
- Optic block: 1, 2, 4
- Reagent position: 3
- Calculate function: conversion with sec, INR, mg/dl
- Calibration curve: by-hand input, automatic saving, automatic transferring
- Display: 128 * 64 LCD screen
- Printing system: Thermal printer



Blood Gas Analyzer

BG-800

- Multi-combination parameters
- Self-made maintenance free electrodes
- Both for syringes & capillary
- 35UL for capillary, 95UL for whole blood
- 1 min from the aspiration to result
- Long-lasting fluid system
- All-in-one design calibrate cartridge
- Cartridge expiration alarm & residue
- Preheats reagents & sample
- Optional Auto QC cartridge with H/M/L level
- Data storage >5,000
- Colorful touch screen with high resolution
- Friendly operation interface
- Infrared human-detector
- Rich data management interface
- Battery backup
- Build-in thermal printer
- Convenient bar-code system management
- Economic cost per test



Electrolyte Analyzer

AC9800

- Measuring items K,Na,Cl,Ca,pH
- Calculating item nCa, TCa
- Measuring time: 40s
- Time for sampling, measuring, washing and printing: 60s
- Sample size 100ul
- Data storage 10000
- Automatic sampling: 25-bit sampling system for option (20 samples, 2QC, 1 emergency , 1 washing)
- Communication interface 232 interface
- Display 240×64LCD
- Printer 58mm thermal printer



Urine Analyzer

UA-11B

- Test items: GLU, pH, NIT, PRO, BLD, Ca, CRE, KET, BIL, URO, SG, LEU, VC
- Test throughput: 120 tests/hour or 60 tests/hour
- Language: English
- Display: Large LCD display, Resolution 240×128
- Printer: Built-in thermal recorder, paper with 57mm
- Interface: Standard RS-232
- Storage: 1,000 results
- Light source: Super-high brightness LED white light source, with 30,000 hours lifespan



Automatic Glycated Hemoglobin HbA1c Analyzer

AC6601

- Testing Method: Low pressure ion exchange liquid chromatography
- Testing Item: glycated hemoglobin HbA1c
- Testing Scope: 3% ~ 18%
- Testing Parameters: Precision (CV) ≤3%, Accuracy (V) ≤1.50%
- Testing Time: 4 minutes (including reporting)
- Sample type: venous blood (EDTA anticoagulation), Peripheral finger blood
- Sample volume: 5μl whole blood for each sample



Hemodialysis Machine

ADM-8

Dialysate temperature: Preset range 33.0 ~ 39.0°C, ±0.1 ;
 Dialysate flow: Less than 800ml/min (Adjustable)
 Concentration of dialysate: 12.1 mS/cm ~ 16.0 mS/cm, ±0.1 mS/cm;
 Dialysate ratio: Various proportions
 UF (dehydration): 0 ml/h ~ 4000 ml/h
 Resolution: 1ml
 Precision: ±1%

Heparin Pump

Syringe size: 20, 30, 50ml
 Flow range: 0 ml/h ~ 10 ml/h
 First dose range: 1.0 ~ 20.0ml
 Resolution: 0.1ml
 Precision: ±0.2 ml or ±5% of the reading

Extracorporeal circulation

Venous pressure: -180mmHg ~ +600mmHg, ±10mmHg
 Arterial pressure: -380mmHg ~ +400mmHg, ±10mmHg
 TMP pressure: -180mmHg ~ +600mmHg, ±20mmHg
 Blood pump, assistant pump flow range: 30ml/min ~ 600ml/min (Inner diameter Φ8mm)
 Resolution: 1ml
 Precision: ±10ml/min or 10% of the reading
 Blood leak detection: Photo chromic detecting
 Bubble detection: Double protection



Dialysis Chair

DC01

Length: 1000mm-1880mm
 -Width: 830mm
 -Height: 1350mm
 -Seat Height: 550mm
 -Seat Width: 600mm
 -Back Cushion: 200*500*130mm
 -Caster: Φ125mm, PU Caster
 Back Section Lift
 -Change angle: -10° -80°
 -Power: AC220V, 50Hz

-Power consumption: About 135W
 -Up and down time: About 20 seconds
 -Continuous use time: About 5 minutes
 Leg Section Turn
 -Change angle: -10° -80°
 -Power: AC220V, 50Hz
 -Power consumption: About 90W
 -Up and down time: About 20 seconds
 -Continuous use time: About 5 minutes



Hollow polysulfone membrane fiber dialyzer



Hemodioxifier



Dialysis Catheter



AB Powder/Concentrate



Extracorporeal circulation blood line



Electric Hospital Bed

A06-B01P Five Function

- Cold steel plate whole molding aperture clashing bed panel
- Integrated stamping frame and treated with electrostatic spraying, anti-aging and anti-rust
- Streamline headboard and banister of PE
- 4pcs electro-motor, 1 pc control box
- One set of handset
- Four truckles adopt central control system, which is stable and reliable
- Max loading: 280kg
- Battery backup
- Has been assessed and conforms to the standards of ISO13485:2003.CE



Manual Hospital Bed

MB04A 4-Crank

- Flexible bedstead with anti-bacteria double powder coating treatment
- High durable retractable built-in crank with universal linking card structure, safe, quiet and smooth operation
- Backrest tilting: $60 \pm 5^\circ$
- Knee board tilting: $35 \pm 5^\circ$
- Reverse and trendelenburg: $12 \pm 2^\circ$
- Hi-lo: 500-700mm
- Detachable plastic bed head/foot board
- Collapsible aluminum side rails
- 5" castors with brake on the cross



Manual Hospital Bed

BM011-crank

- Completely metal frame
- \varnothing 38 bed head/foot board
- Bed surface made of cold roll steel sheet
- Bed size: 2080*900*500mm



Baby Crib

BB02

- Size: 80*60*80cm
- Material: Stainless steel
- Plastic basket could load more items for baby use



Child Bed

BC01

- Completely stainless steel
- 3" castors with brake on the cross
- Size: 80*45*80cm



Examination Couch

EC04

- Stainless-steel frame with foldable leg
- 4pc side bar provide more heavy duty
- Padded mattress support via wood plate



Overbed Table

OT04 Adjustable

- Laminated table top with size: 76.5*38*1.8cm
- Powder-coated steel "H" base provides security and stability
- Height adjustable from 73-115cm
- 4pcs swivel nylon castors allow for easy maneuverability



History Trolley

C01

- Size: 760*585*1010mm
- 42pcs case-history folder
- 1 bigger drawer
- Central column locking system
- Luxurious 5" castor with brake on the cross



Bedside Cabinet

L02 (W/castor)

- ABS material
- Tower hanger
- Size: 48*48*76cm
- Colors available in Blue, Green, Grey



Medicine Trolley

C04A

- Size: 850*520*1010mm
- 50pcs medicine boxes
- 2pcs garbage bin with lid and 1pc transparent file case
- 1pcs sliding board and 1pc I.V pole with 5 hooks
- 5" castor with brake on the cross



Transfer Stretcher

S05 (Hydraulic)

- Equipped with 2 hydraulic pumps, Hi-lo: 550-870mm
- Central locking system makes the stretcher easier to go or stop
- Optional with I.V. Pole and mattress
- China pump or imported pump for you to choose



Emergency Trolley

C05

- Size: 850*520*1010mm
- 5pcs drawers (2 small, 2 middle and 1 big)
- 2pcs garbage bin with lid and 1 transparent file case
- 1pc I.V pole and 1pc Tray
- 5" castor with brake on the cross



Patient Trolley

A06-A101B

- Material: Stainless steel
- Stainless steel rail can up and down
- Bed frame can be separated
- Size: L1935*W570*H650mm



Anesthesia Trolley

C08A

- High-strength alloy ABS boards
- Stainless steel guard rail
- Dust basket, File bin, Needle disposal holder
- Sliding side shelf, Centralized lock, Multi bin container
- 2 ABS drawers & Doors
- 4 luxurious noiseless casters, 2 with brakes
- High quality aluminum columns



Instrument Trolley

C14

- Size: 700*460*860mm



Dress Changing Trolley

C11

- Size: 700*460*860mm



Instrument Trolley

C13

- Size: 540*430*880mm



Instrument Trolley

C16

- Large: 800*470*865mm
- Medium: 670*440*865mm
- Small: 600*420*865mm



Clean Trolley

C23

- Size: 1050*475*980mm



Visit Chair

VC01

- Steel frame with powder-coating finish
- High density comfortable seat cushion
- Size: 2150*700*600mm
- Removable castor for easily extend and foldable



Waiting Chair

CW01

- Steel frame with chrome finish
- Molded backrest with air hole
- Seat width: 670mm, Seat height: 440mm, Back height: 360mm
- Optional A: 2, 3 and 4 seats available
- Optional B: Padded seat and back



Reclining Infusion Chair

IC04

- Metal frame with reclining design and I.V Pole
- High density upholstery make the seat more comfortable
- Wide wood armrest convenient and comfortable for the patient
- One handle-controller for lay down or seat up



Infusion Stand

IV02

- Chrome-plated steel pole provides strength and durability
- Non-breakable composite 5-leg base and 5 swivel ball bearing casters
- Easily converted to 2 hook or 4 hook with easy to release push-bin



Mayo Instrument Stand

MIS01

- Castors provide additional mobility and convenience
- Removable stainless steel tray in 490*340*25mm
- Tray height adjust from 736-1117mm with lock



Kick Bucket

KB02



Ward Screen

W04

- 2, 3 and 4 panels available
- Structure made from non-magnetic stainless steel tube
- Folding panels, each 60cm wide
- Fabric washable and flame retardant curtains for each section
- Mobile on twin wheel swivel castors 50mm, for easy movement
- Knockdown construction



Dust Bin

DB01



Stepper

W06

- 1, 2 and 3 steppers available
- Metal frame with powder-coating, can be stainless steel
- Solid pad with rubber cover against slide
- Durable and non-slip rubber tips



Stool

W07, W08 (round base)



Appliance Cupboard

AC02

- Constructed from stainless steel
- 2 lockable glass door, 2 lockable drawers
- 5 layer adjustable shelves
- Elegant appearance, Knock down construction



First-Aid Stretcher

AFA-1F1 Aluminum Alloy Folding

It is mainly used for the hospitals, emergency centers and battle field to carry patients and wounded person

- Product size (L x W x H): 208 x 55 x 13cm
- Folding size (L x W x H): 104 x 17 x 9cm
- Load bearing: less than 159kg



Ambulance Stretcher

AFA-3A Automatic Loading

This machine is very convenient; one person is enough to send the patient (with this stretcher) to the ambulance car.

- Product Size (L * W * H): High position: 190 x 55 x 90cm;
- Low position: 190 x 60 x 26cm
- Maximum Angle of the back: 60°
- Load bearing: less than 159kg



Scoop Stretcher

AFA-4B

It is a separately-type stretcher, which can set the stretcher into two parts and it is easy to lock and unlock

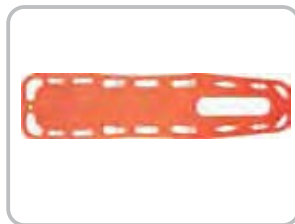
- Product Size (L x W x H):
- Max. Size: 210 x 44 x 9cm
- Min. size: 120 x 44 x 9cm
- Load bearing: less than 159kg



AFA-16 Head Immobilizer



AFA-17 Cervical Collar



AFA-1A6A Spine Board



Silicone Manual Resuscitator



First-Aid bag

Emergency skills training Manikin

ACLS8000C

ACLS8000C is the world leading man-machine interaction ACLS training simulation system, can simulate real emergency scenes and all the related signs of emergency patient, such as: pupil states, artery pulse, heart rhythm, heart and lung auscultation sound, etc.

Components:

Hardware:

- ACLS Full-body manikin
- S7 BP measurement trainer
- ACLS functional connector
- Laryngoscope
- Tracheal canola
- Transfusion set
- BVM
- Auscultator

Software:

- LAN application software for teacher V2.0
- LAN application software for students V2.0
- ACLS script editor V2.0



Infant CPR Manikin

CPR160

- Simulating standard open airway
- External breast compression: display device and alarm device
- Artificial respiration (inhalation): display device and alarm device
- Ratio of compression and artificial respiratory: 30:2 (one person) or 15:2 (two persons)
- Operating cycle: one cycle includes five times of 30:2 or 15:2 ratio of compression and artificial respiration.
- Operation frequency: at least 100 times per minute
- Operation methods: exercise operation
- Examination of brachial artery response: pinch the pressure ball by hand and simulate brachial artery pulse
- Working conditions: Input power is 110-240V



Blood Pressure Training Arm Model



Advanced Adult Nursing Manikin



Surgical Suture and Bandage Model



Vertebral Puncture Model



Surgical Suture Arm Model



Suture Training Kit



Infant Full Body Venipuncture Model



Gynecological Examination Model



Delivery and Maternal and Neonatal Emergency Simulator



Infant Nursing Manikin



Delivery Model



Breast Examination Model



Digital Remote Controlled Cardiopulmonary Auscultation Manikin



Hand Joint Model



Lower Limb Bone Model



Female Pelvis Model



Lumbar Vertebra Model



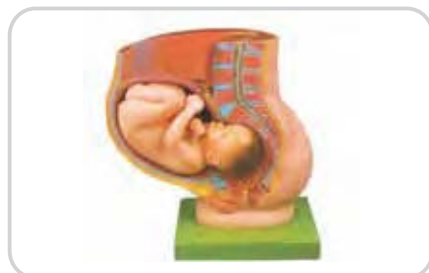
Skull Model



Human Skeleton Model 180CM



Sexless Torso



Pregnancy Pelvis with Mature Fetus-2 Parts



Luxurious Dental Care Model(32pcs, Backout)



Embryonic Development Stages Model (8 parts)

Slit Lamp

AME-5D 5 steps slit lamp

Microscope Type	Parallel Stereoscope
Magnification	Five steps magnifications
Eye Piece	12.5x
Total Magnification and Diameter of Visual Field(mm)	6x, 10x, 16x, 25x, 40x
Adjustable Range of Pupil Distance(mm)	55~75
Adjustable Diopter	-5D~+5D
Slit Width(mm)	0-9 adjustable or 0-14 adjustable
Slit Height(mm)	1~9 adjustable or 1-14 adjustable
Slit Angle	0~180°
Slit Inclination	5°, 10°, 15°, 20°
Light Spot Diameter (mm)	Φ9, Φ8, Φ5, Φ3, Φ2, Φ0.2 Or Φ14, Φ8, Φ5, Φ3, Φ2, Φ0.2
Filters	Heat Absorption, Grey, Red Free, Cobalt Blue
Illumination Bulb	12V / 30W or 12V/50W halogen bulb



Tonometer

YZ30R Tonometer

- Designed on the principle basis of goldman tonometer.
- Suitable for aig Streit type slit lamp



Ophthalmoscope

AME-8B(Rechargeable) Ophthalmoscope

- Illumination form: small light spot (1.6mm), large light spot (3.2mm), slit, central-net, Red-free filter
- 3.6V/2.6W mini-halogen bulb
- Li-on battery, 5 VA input power



Biological Microscope

XSZ-107BN

- Viewing head: Sliding Binocular Head Inclined at 45°
- Eyepieces: Wide Field Eyepiece , WF10X (WF16X optional)
- Achromatic objective: 4X, 10X, 40X (S) 、 100X (S, Oil)
- Stage: Double Layer Mechanical
- Stage size: 140mm*140mm
- Moving Range: 75mm*45mm
- Focusing: Coaxial Coarse and Fine Adjustment
- Focusing Range: 30mm
- Focusing Interval: 0.002mm
- Condenser: N.A=1.25 Abbe condenser, Iris diaphragm & filter
- Illumination: Halogen Lamp 220V/6V20W or 110V/6V20W (LED lamp optional)



Optometry Unit

COT-200

Electromotive:

- Table Size: 965*500*25mm
- Table Height: 850mm
- Table Rotary angle: 90°
- Table Sliding distance: 350mm
- Phoropter bracket manual control

Manual:

- Table Size: 1010*480*33mm
- Table Height: 860mm
- Table Rotary angle: 90°
- Table Sliding distance: 460mm
- Phoropter bracket electromotive control



Auto Lensmeter

JD-2600A/B

- 6.4" color LCD and touch screen
- Inside UV measurement
- Modern and fashion design
- Quick measurement and accurate data
- Auto memory and auto screen save
- PD measurement and data auto save
- Measurement to various lenses, such as single lens, multifocal lens, progressive lens and contact lens, can be performed
- The screen products legible display of the measurement data and icons fir easier identification to select your desired choices for the measurement



Ophthalmic Ultrasound

2400S

- Display Mode: B, B+B, B+A, A
- Hint: preset keyword
- Case Search: Multi-keywords
- Screen: 15 inch LCD
- Built-in battery: can use 4 hours
- User-defined report template poor credit secured loans



KE-Refractometer

FA-6800

- Refractive and Keratometer measurement mode
- Refractive measurement with Hexagon prism
- With high quality of hexagon prism and highly sensitive CCD, it provides unmatched accuracy and reliability
- 7" TFT LCD color display, Just move, it will automatically focus the eye and get the value



Dental Unit

DU-8900 Luxury

- 4 hole high-speed handpiece tubing with connector 2
- Low-speed handpiece tubing with connector 1 set
- 3-way syringe (cold and hot) 2 piece
- Adjustable headrest 1 set
- Double armrest 1 set
- Down-mounted instrument tray 1 set
- 6-position for handpieces, syringe, scaler and micromotor
- Water suction and saliva ejector 1 set each
- LED operation lamp with sensor DU-152 1 set
- American style lamp arm 1set
- Build-in model LCD X-film viewer 1 set
- Imported DC motors (Linak) 1 set
- Key-touch system 1 set
- Assistant control system with control panel 1 set
- Water purified system 1 set
- Water heating system 1 set
- Water bottle 2 pcs
- Auto water supply and flush cuspidor system 1 set each
- Turnable ceramic cuspidor 1 set
- Multi-function foot pedal DU-106 1 set
- Dentist stool DU-010 1 piece
- Micro fiber leather cushion 1 set
- Imported solenoid valve 1 set
- ABS plastic covers 1 set
- Imported (USA) air and water tubes
- All kinds of copper valves
- With 12 memories
- Linked movement chair frame 1 set
- Aluminium backrest-1set
- New base (steel paste with strong PU cover) 1set
- With safety system



DU-8900 Luxury

Dental X-ray Film Processor

ADF-05

- Open-room operation, small volume and noise, simple operation, safe, fast and durable
- Nominal input power: $\pm 12W$
- Film run through time: 2~8min
- Protecting Category: 11
- Defend Grade: IP21
- Weight of unit: 7.5kg

Dental X-ray Unit

ADM-10B / ADM-10D

- Tube voltage: 60KVp
- Tube current: 8mA
- Focus size: 1.5mm
- Total filtration: 2.5mmAL
- Exposure time: 0.2 to 4 sec
- Leak radiation: Outside one meters $\leq 0.002mGy/h$ (National standard: 0.25 mGy/h)
- Optional: Tube current: 0.5mA ;
- Focus size: 0.8mm



ADM-10B

ADM-10D

Cassette Steam Sterilizer

CA-52L

Quick sterilization for small type medical appliances used in dental clinic, E.N.T and gynecology departments.

Type: CA-52L Cassette autoclave	
Dimensions (L*W*H, mm)	580*460*190
Cassette external size (L*W*H, mm)	480*196*80 (CA-52)
	570*196*80 (CA-52L)
Cassette internal size (L*W*H, mm)	380*180*78 (CA-52)
	480*180*78 (CA-52L)
Cassette volume (liter)	5.2 & 6.0
Reservoir volume (liter)	3.4
Maximum steam temperature(°C)	138
Electrical rating	220VAC $\pm 10\%$, 50Hz,
Weight(kg)	37



ADF-05



CA-52L

ENT Diagnostic Set

WG-XPC

- Ophthalmoscope— 1
- Otoscope Carrier— 1
- Ear Specula— 4
- Nasal Speculum— 1
- Laryngeal Mirror Stem— 1
- Laryngeal Mirrors— 2
- Tongue Depressor Plastic — 1
- Battery Handle— 1
- Spare Bulbs (2 Large and 2 Small 2.5v/0.3A)— 5
- Transformer— 1



Otoscope

EJ-XPC

- Size of the aural: 2.5, 3, 4, 5mm diam
- Power Supply: AC220V
- Illumination Bulb: 3.5V/0.7A
- Magnifier: 3 Times



Fiber Laryngoscope

MHJ-I

- Power Supply: 1.5V X2 "C" Type
- Illumination Bulb: 2.5V/0.45A
- Blades: 92, 114, 134mm for adult



ENT Treating Desk

1800DP (for single)

- Main Operating Desk--1
- Super-mute Oil-less Positive--1
- Pressure Pump--1
- Super-mute Oil-less Negative--1
- Mute Instrument--1
- Spray Gun--3
- Absorbing Gun--1
- Blowing Gun--1
- Warm-up Demist Device--1
- Versatile Cold Light Lamp --1
- Controller (weak electric controls strong one)--1
- Main and Auxiliary Suction Bottles--1
- Robot Arm and Upright --1
- Equipment Set--1
- Ointment Jar--4
- Waste Bin--1
- Suction Tip--1

ENT Treating Chair

1900D (Electric)

- The flat lift range of treating chair: 560-760mm (200mm)
- Backrest tilt angle: 90°~ 180°
- The rotation of treating chair: 360°, can be fixed in any position
- Headrest extension: 0~200mm
- Maximum load: 135kg
- Take-off and landing speed: 10mm/s
- Input power: ≦ 150W
- The control button, and foot switch work in safety extra-low voltage



1800DP (for single)

1900D (Electric)

Oxygen Concentrator

ACS-5

- Max. Flow: 5L/min
- Product size: 380*325*590mm
- Oxygen density: 93±3% (V/V)
- Power consumption: ≤ 480W
- Noise: ≤53dB (A)
- Continuous Working Time: 10,000 hours
- Optional Function: Nebulizer function, Remote function,
- Oxygen density alarm function



Nebulizer

408D (Air Compressing Nebulizer)

- Method of nebulization: Piston pump compressing
- Compressor Pressure: 14 psi, 40psi
- Free air flux compressing pump: ≥ 10 LPM
- Nebulization rate: 0.20 ml/min
- Noise: ≤65 dB
- Continuous working time: 7,000 hours



Blood Pressure Monitor

U-80AH (Arm Electronic), U60BH (Wrist Electronic)

- Intelligent automatic measurement of systolic, diastolic and pulse with time and date. Arrhythmia reminds.
- Store up 2*90 sets memory of measurement values.
- WHO blood pressure classification display.
- Time/Date information display.
- Measuring unit convert between Kpa/mmHg.
- Large LCD screen and easy to read.
- 4 pcs AA alkaline battery or power adapter



Fingertip Oximeter

FO-500A

- Can measure SPO2 and PR accurately
- SPO2 and PR display, PR waveform and bar graph display
- Battery voltage low indication
- Four directions and eight modes
- Low power consumption; shut off automatically when no signal.
- Pulse sound function
- Alarm function



Handheld Pulse Oximeter

HO-25

- Display: 3.5" Color TFT
- Resolution: 320x240
- Display Mode: Standard face, Waveform face, Display Direction adjustable
- Indicator: Power indicator light, Alarm sound, Pulse tone
- Interface: One dual-purpose socket for connecting SPO2 sensors and communication cables



Electronic Baby Scale

SH-20

- Capacity: 20kg/grad.: 5g
- Use 4 x AA batteries (not included), high precision load cells
- Large LCD with blue backlight
- Have Memo Function, USB connect to the computer
- Tray can be separated
- Unit: kg, g&lb



Mechanical Dial Scale

JSA-180

- Platform Scale with Height Meter
- Capacity: 180kg/grad: 1kg, 396lb/grad: 2 lb
- Height Meter from: 84-210 cm (hideable)
- Large Dial D=20.5 cm
- Unit: kg or kg&lb



Electronic Pediatric Scale

TCS-150-RT

- Max weighing: 150kg
- Division: 50g
- Display: LCD
- Power: AC/DC
- Height range to be measured: 60~160cm
- Min value of height per division: 5mm



Mechanical Ruler Scale

RGT.A-200-RT

- Max weighing: 200kg
- Division: 100g
- Height range to be measured: 75~200cm
- Min value of height per division: 5mm



Electronic Adult Scale

TCS-200LP

- Capacity: 200kg/grad.: 50g
- Plastic displayer, LCD screen display 120*60mm
- With Rechargeable Battery (Included)
- With BMI function
- Powder-coated cream cover& metal housing
- High measure: 60-210 cm (hideable)
- Unit: kg or lb



Baby Hanging Scale

SL-25

- Max weighing: 25kg
- Min value per division: 100g



Electronic Wheelchair Scale

LYC02

- Capacity: 250kg/grad.: 100g
- With Rechargeable Battery (Include)
- Unit: kg or g, lb
- 5.2" LCD displayer (120*57mm) with blue backlight
- Foldable handle
- Front wheel 360 degree turning; back wheel 360 degree turning and lockable



Metrical Rod

MR-200

- Height range to be measured: 60~200cm
- Min value of height per division: 1mm



Multifunctional Drill and Saw

B021

- Charger electrical source voltage: AC110 - 240V/50 - 60HZ
- Forward and Reversal
- Cranial / Bone Drill REV: ≥ 800 r.m.p.
- BUR REV: ≥ 40000 r.m.p.
- Acetabulum Drill REV: ≥ 180 r.p.m
- Cannulated Drill REV: ≥ 600 r.p.m
- Frequency of the saw: ≥ 15000 t.p.m.
- Cranial Drill Torque: ≥ 7600 gcm
- Acetabulum drill Torque: 33000gcm
- Cannulated Drill Torque: 11200gcm
- BUR TORQUE: ≥ 100 gcm
- Noise: ≤ 90 db



Oscillating Saw

B020

- Charger Electrical Source Voltage: AC220V/50HZ
- Voltage of Battery: 14.4V
- Blade Cutting Arc: 5°
- Frequency of the saw: ≥ 15000 t.p.m.
- Noise: ≤ 90 db



Ordinary Bone Drill

RA-II

- Rotation at maximum 1200rpm, stepless speed adjustment,
- Backward/forward rotation, and stable running
- Diameter of drill bit ($\phi 0.6\sim 8$ mm)
- Green environment-friendly battery (14.4V), disinfection-free
- Powerful mainframe, integrated closed rear cover
- High-temperature sterilization/disinfection of whole device



Head Bracket



Disposable Endoscopic Linear Cutter Stapler



Disposable Circumcision Stapler



Disposable Linear Cutting Stapler



Disposable Circular Stapler



Disposable Linear Stapler ZX-(B)Type



Disposable Anorectal Stapler



Disposable Hemorrhoidal Stapler



Disposable Skin Stapler



ABSORBABLE SURGICAL SUTURES WITH / WITHOUT NEEDLES

POLYGLYCOLIC ACID (PGA)



Synthetic, Absorbable, Braided Suture with Needle or with out Needle

CHROMIC CATGUT (CC)



Absorbable Suture with Needle or without Needle

PLAIN CATGUT (PC)



Absorbable Suture with Needle or without Needle

POLYDIOXANONE (PDS or PDO)



Synthetic, Absorbable, Braided Suture with Needle or without Needle

NON-ABSORBABLE SURGICAL SUTURES WITH / WITHOUT NEEDLES

SILK BRAIDED (SK)



Non-absorbable, Braided, Natural Suture with Needle or without Needle

POLYPROPYLENE MONOFILAMENT (PM)



Synthetic, Non-absorbable, Monofilament Suture with Needle or without Needle

NYLON MONOFILAMENT (NL)



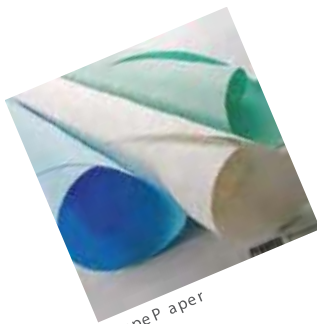
Synthetic, Non-absorbable, Monofilament Suture with Needle or without Needle

POLYESTER BRAIDED (PB)



Synthetic, Non-absorbable, Braided Suture with Needle or without Needle

Other Products



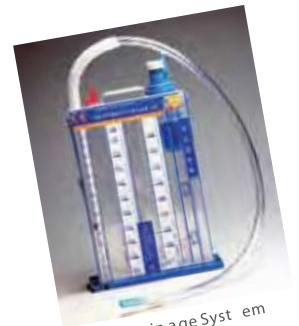
Crepe Paper



Sterilization Packages



Surgical Gloves



Chest Drainage System



Shape Destroyed Machine



Wheelchair



Stethoscope



Walking Aids



Anti-decubitus mattress



X-ray Film Illuminator



X-ray Protective Aprons

Positive Response In Supply



Main Office:

Namasuba - Kikajjo,
off Entebbe road
The Hub, Level 3
after Kasozi mosque

Show Room:

Twese plaza F13, Wilson road
Tel: +256 702023536
+256 701217987
+256 755668768

www.leanmedicalsupplies.com

Email: leanmedicalsupplies20@gmail.com



LEAN MEDICAL
AND LABORATORY SUPPLIES (SMC) LTD